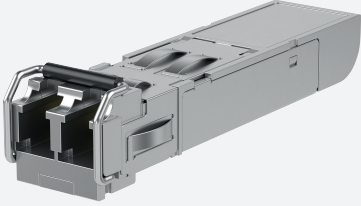


# SFP: 1000BASE-LX Gigabit Ethernet Single-mode BiDi-B Fiber Extended Temperature



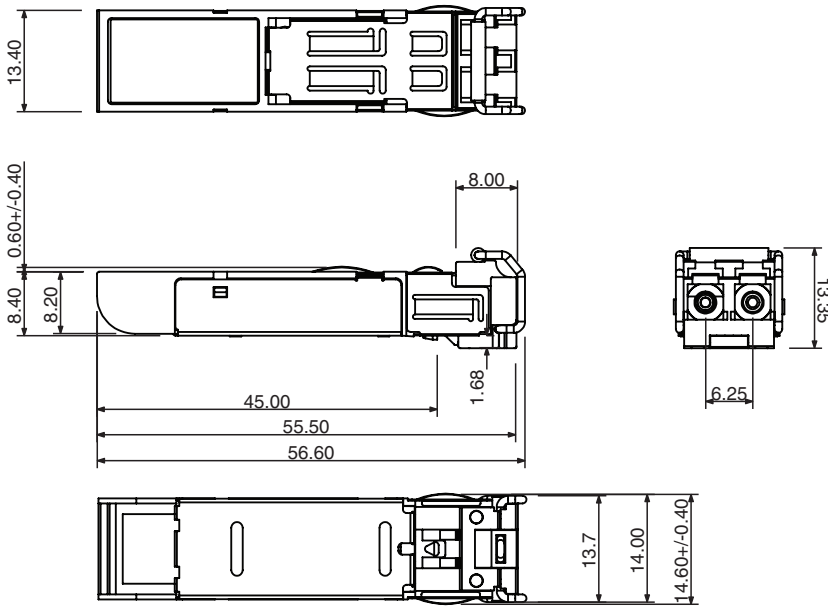
## SFP-S-10KM-G-W-BIDI-B

- Industry standard small form pluggable (SFP) package
- SFP Multi-Source Agreement compliant
- Hot pluggable
- Class 1 laser product complies with EN 60825-1
- Single power supply 3.3V
- TTL signal detect indicator
- Duplex LC connector
- Extended temperature range: -40 to 85° C

Single-mode BiDi-B 10KM 1000BASE-LX Gigabit Ethernet Fiber SFP



## Dimensions



## Technical Data

### Ethernet Interface

Standards

IEEE802.3z 1000BASE-LX	yes
------------------------	-----

### Interface 1

Interface type	1000BASE-LX Gigabit Ethernet Fiber
Physical	SFP, Hot pluggable, BiDi-B
Transfer rate	1.25 Gbps

### Fiber optics functionality

Release date: 2024-08-21 | Date of issue: 2024-08-21 | Filename: 70116446\_eng.pdf

## Technical Data

Wave length		TX: 1550 nm RX: 1310 nm
Cable type		9/125µm Single-mode
Cable length		max. 10 km
Connector type		1 Simplex LC
Transmit power (optical)		-9 ... -3 dBm
Receive sensitivity		-21 ... -1 dBm
Link budget		12 dB
<b>Directive conformity</b>		
Electromagnetic compatibility		
Directive 2014/30/EU		EN55024, IEC 61000-4-2, IEC 61000-4-3, IEC 61000-4-4, IEC 61000-4-6, IEC 61000-4-8
<b>Standard conformity</b>		
Emitted interference		CISPR 22 , FCC Part 15 Subpart B Class A , EN61000-6-4, IEC61000-6-4
Noise immunity		EN 55024
Standards		SFP Multi-Source (MSA) compliant Class 1 laser product complies with EN 60825-1
<b>Ambient conditions</b>		
Ambient temperature		-40 ... 85 °C (-40 ... 185 °F)
Storage temperature		-40 ... 85 °C (-40 ... 185 °F)
Relative humidity		max. 95 %
<b>Mechanical specifications</b>		
Mass		17 g
Dimensions		
Height		8.5 mm
Width		13.4 mm
Length		56.5 mm