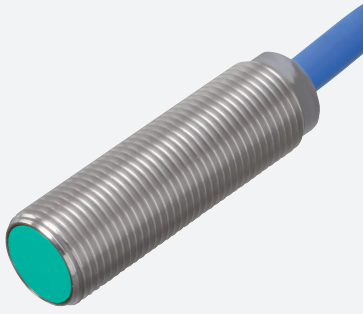


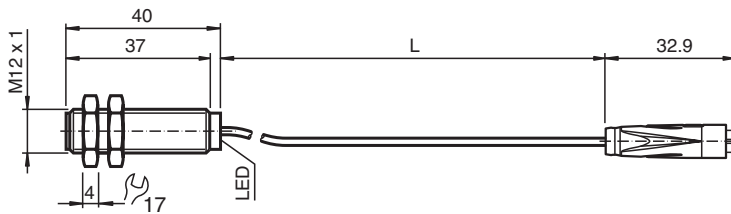
Inductive sensor

NCB4-12GM40-Z12-Y70117533

■ 4 mm flush



Dimensions



Technical Data

General specifications

Switching function		Normally closed (NC)
Output type		Two-wire
Rated operating distance	s_n	4 mm
Installation		flush
Assured operating distance	s_a	0 ... 3.24 mm
Actual operating distance	s_r	3.6 ... 4.4 mm typ.
Reduction factor r_{Al}		0.41
Reduction factor r_{Cu}		0.39
Reduction factor r_{304}		0.78
Output type		2-wire

Nominal ratings

Nominal voltage	U_o	8.2 V (R_i approx. 1 k Ω)
Switching frequency	f	0 ... 1500 Hz
Hysteresis	H	1 ... 15 % typ. 5 %
Reverse polarity protection		reverse polarity protected
Short-circuit protection		yes
Suitable for 2:1 technology		yes , Reverse polarity protection diode not required
Current consumption		
Measuring plate not detected		min. 2.2 mA
Measuring plate detected		≤ 1 mA
Switching state indicator		all direction LED, yellow

Functional safety related parameters

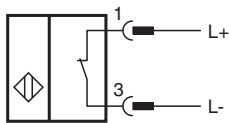
MTTF _d		3010 a
-------------------	--	--------

Release date: 2024-10-17 Date of issue: 2024-10-17 Filename: 70117533_eng.pdf

Technical Data

Mission Time (T _M)	20 a	
Diagnostic Coverage (DC)	0 %	
Compliance with standards and directives		
Standard conformity		
Standards	EN IEC 60947-5-2	
Approvals and certificates		
CCC approval	CCC approval / marking not required for products rated ≤36 V	
Ambient conditions		
Ambient temperature	-25 ... 100 °C (-13 ... 212 °F)	
Storage temperature	-40 ... 100 °C (-40 ... 212 °F)	
Mechanical specifications		
Connection type	fixed cable with female cordset	
Housing material	Stainless steel 1.4305 / AISI 303	
Sensing face	PBT	
Degree of protection	IP66 / IP67	
Socket		
Number of pins	3	
Connection assembly	female cordset, overmolded, 8 mm	
Cable		
Cable diameter	4.8 mm ± 0.2 mm	
Bending radius	> 10 x cable diameter	
Material	PVC	
Color	blue	
Number of cores	2	
Core cross section	0.34 mm ²	
Length	L	1 m
Mass	58 g	
Dimensions		
Length	40 mm	
Diameter	12 mm	
General information		
Scope of delivery	2 self locking nuts in scope of delivery	

Connection



Connection Assignment

