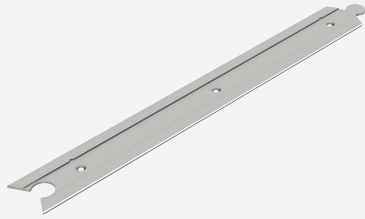


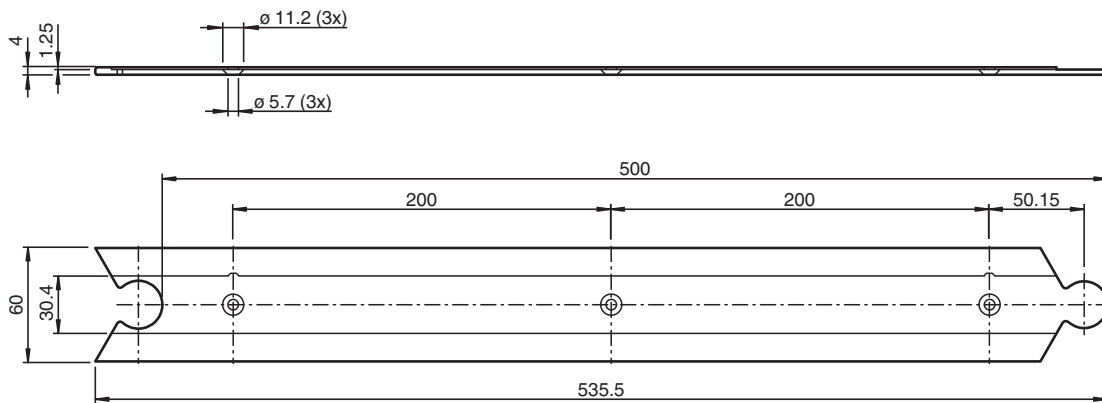
Countersunk profile rail PGV-PR-GM-CONT500



- Sturdy construction

Countersunk rail for realization of continuous tracks

Dimensions





Technical Data

General specifications	
Length	535.5 mm
Width	60 mm
Ambient conditions	
Operating temperature	-40 ... 80 °C (-40 ... 176 °F)
Installation temperature	10 ... 40 °C (50 ... 104 °F)
Mechanical specifications	
Material thickness	4 mm
Material	AlMg4.5Mn0.7
Surface	ELOX-E0EV1-15
Mass	265 g

Mounting

Countersunk profile rails are embedded into a pre-milled groove in the floor. These are glued or screwed into the floor groove depending on the application. The milled floor groove is then grouted with suitable filler material. The groove for the countersunk profile rails must be protected against penetration of glue or filler material during installation. Once the filler material has dried out, the corresponding metal code bar is inserted into the countersunk profile rails via the self-adhesive rear side. If necessary, metal code bars that have been glued in can be replaced by levering them out.

Accessories

	PGV-PR-GM-END	Countersunk rail to end continuous tracks
	PGV-PR-GM-START	Countersunk rail for starting continuous tracks