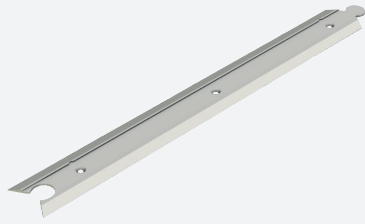


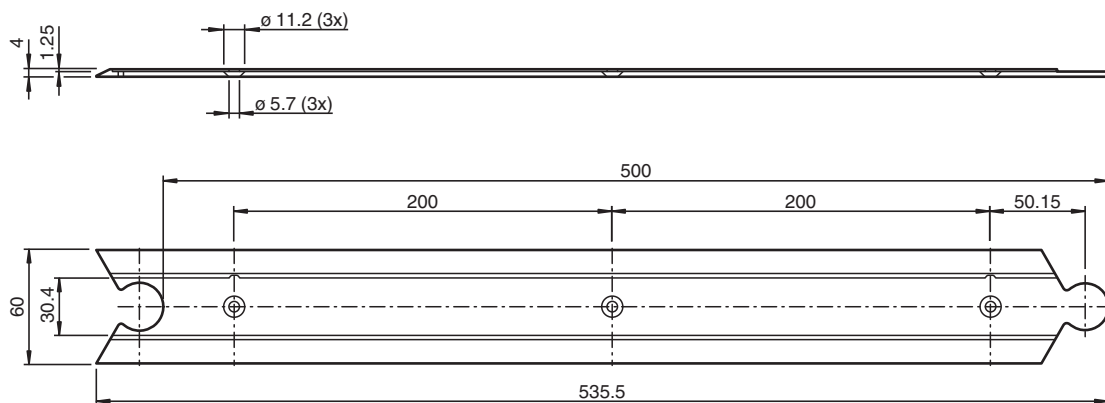
Drive-over profile rail PGV-PR-SM-CONT500



- Sturdy construction

Drive-over rail to realize endless tracks

Dimensions





Technical Data

General specifications	
Length	535.5 mm
Width	60 mm
Ambient conditions	
Operating temperature	-40 ... 80 °C (-40 ... 176 °F)
Installation temperature	10 ... 40 °C (50 ... 104 °F)
Mechanical specifications	
Material thickness	4 mm
Material	AlMg4.5Mn0.7
Surface	ELOX-E0EV1-15
Mass	209 g

Mounting

Drive-over profile rails are screwed directly to the floor. Alternatively, the drive-over profile rails can be glued to the subfloor. The corresponding metal code bar is then inserted into the drive-over profile rails via the self-adhesive rear side. If necessary, metal code bars that have been glued in can be replaced by levering them out.

Accessories

	PGV-PR-SM-END	Drive-over rail to end continuous tracks
	PGV-PR-SM-START	Drive-over rail for starting continuous tracks