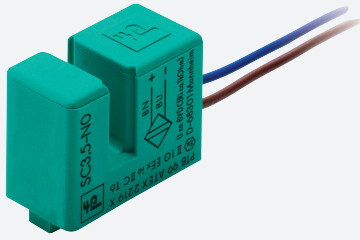


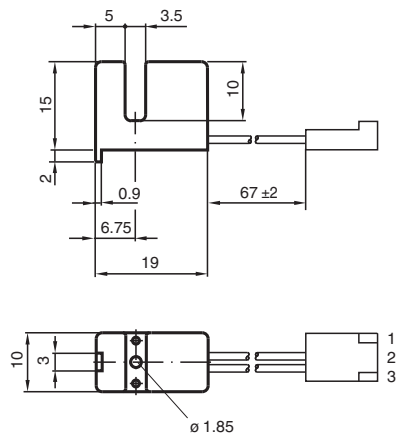
Inductive slot sensor SC3,5-N0-Y106571



■ 3.5 mm slot width



Dimensions



Technical Data

General specifications

Switching function	Normally closed (NC)
Output type	NAMUR
Slot width	3.5 mm
Depth of immersion (lateral)	5 ... 7 typ. 6 mm
Output type	2-wire

Nominal ratings

Nominal voltage	U_o	8.2 V (R_i approx. 1 k Ω)
Operating voltage	U_B	5 ... 25 V
Switching frequency	f	0 ... 3000 Hz
Hysteresis	H	0 ... 0.05 mm
Current consumption		
Measuring plate not detected		≥ 3 mA at nominal voltage
Measuring plate detected		≤ 1 mA at nominal voltage

Functional safety related parameters

MTTF _d	5290 a
Mission Time (T_M)	20 a

Release date: 2024-12-10 Date of issue: 2024-12-11 Filename: 70132966_eng.pdf

Technical Data

Diagnostic Coverage (DC)	0 %	
Compliance with standards and directives		
Standard conformity		
NAMUR		EN 60947-5-6:2000 IEC 60947-5-6:1999
Standards	EN IEC 60947-5-2	
Approvals and certificates		
IECEX approval		
Equipment protection level Ga		IECEX PTB 11.0091X
Equipment protection level Gb		IECEX PTB 11.0091X
Equipment protection level Da		IECEX PTB 11.0091X
Equipment protection level Mb		IECEX PTB 11.0091X
ATEX approval		
Equipment protection level Ga		PTB 99 ATEX 2219 X
Equipment protection level Gb		PTB 99 ATEX 2219 X
Equipment protection level Da		PTB 99 ATEX 2219 X
UL approval		
Ordinary Location		cULus Listed, General Purpose E87056
Hazardous Location		E501628
Control drawing		116-0453
KCC approval		
Hazardous Location		13-AV4BO-0353X
Ambient conditions		
Ambient temperature	-25 ... 100 °C (-13 ... 212 °F)	
Mechanical specifications		
Connection type	flexible leads with plug	
Housing material	PBT	
Degree of protection	IP67 (plug connector, IP20)	
Connector	DuPont	
Cable		
Cable diameter	1.1 mm ± 0.1 mm	
Bending radius	> 10 x cable diameter	
Material	PVC	
Core cross section	0.14 mm ²	
Length	L	65 mm
Dimensions		
Height	15 mm	
Width	10 mm	
Length	19.5 mm	
General information		
Use in the hazardous area	see instruction manuals	

Connection

