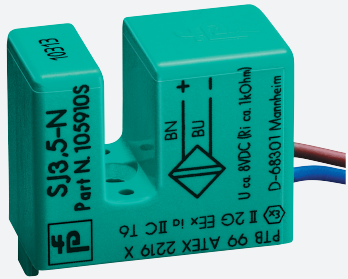


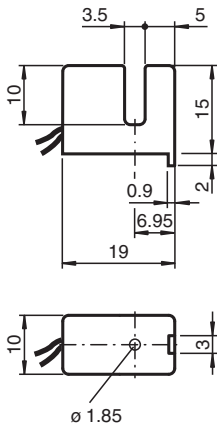
# Inductive slot sensor SJ3,5-N-Y046116



■ Comfort series



## Dimensions



## Technical Data

### General specifications

Switching function	Normally closed (NC)
Output type	NAMUR
Slot width	3.5 mm
Depth of immersion (lateral)	5 ... 7 typ. 6 mm
Output type	2-wire

### Nominal ratings

Nominal voltage	$U_o$	8.2 V ( $R_i$ approx. 1 k $\Omega$ )
Operating voltage	$U_B$	5 ... 25 V
Switching frequency	$f$	0 ... 3000 Hz
Hysteresis	$H$	0.41 ... 0.6 mm
Current consumption		
Measuring plate not detected		$\geq 3$ mA at nominal voltage
Measuring plate detected		$\leq 1$ mA at nominal voltage

### Compliance with standards and directives

Standard conformity		
NAMUR		EN 60947-5-6:2000 IEC 60947-5-6:1999
Standards		EN IEC 60947-5-2

Release date: 2024-05-27 Date of issue: 2024-05-31 Filename: 70132992\_eng.pdf

## Technical Data

### Approvals and certificates

#### IECEX approval

Equipment protection level Gb	IECEX PTB 11.0091X
Equipment protection level Da	IECEX PTB 11.0091X
Equipment protection level Mb	IECEX PTB 11.0091X

#### ATEX approval

Equipment protection level Gb	PTB 99 ATEX 2219 X
Equipment protection level Da	PTB 99 ATEX 2219 X

#### UL approval

cULus Listed, General Purpose

### Ambient conditions

Ambient temperature	-25 ... 100 °C (-13 ... 212 °F)
---------------------	---------------------------------

### Mechanical specifications

Connection type	flexible leads LiY
Housing material	PBT
Degree of protection	IP67

#### Cable

Cable diameter	1.1 mm ± 0.1 mm	
Bending radius	> 10 x cable diameter	
Material	PVC	
Core cross section	0.14 mm <sup>2</sup>	
Length	L	500 mm

#### Dimensions

Height	15 mm
Width	10 mm
Length	19.5 mm

### General information

Use in the hazardous area	see instruction manuals
---------------------------	-------------------------

## Connection

