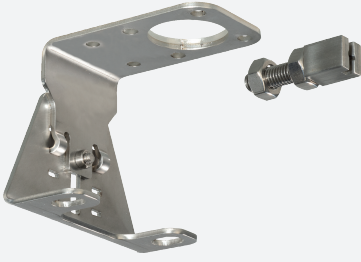


Mounting set

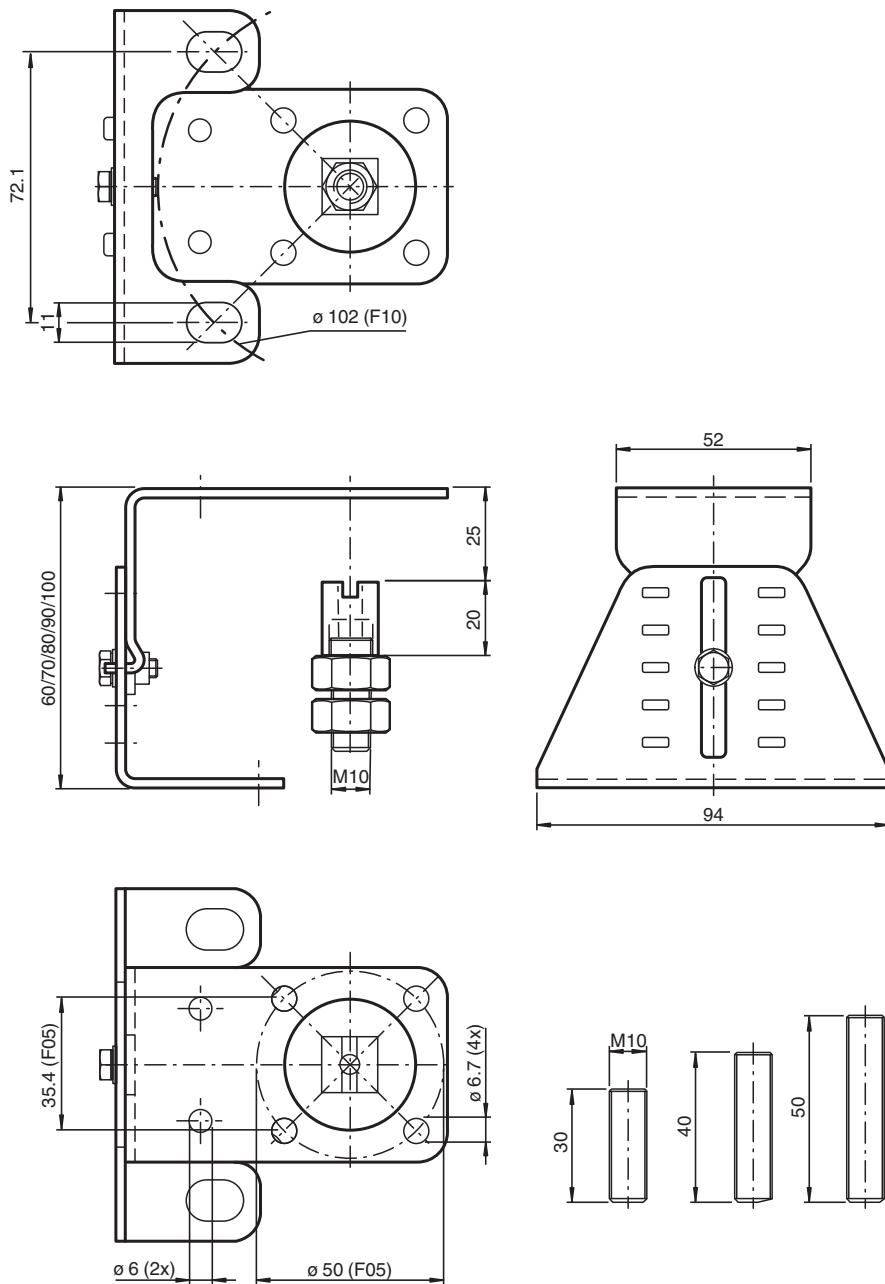
MHV-BT-F10-M10



- Simple mounting
- All-in-one stainless steel solution
- Conforming to standards
- Adjustable in height

Adjustable assembly set for sizes F10 manual operated valves according to EN ISO5211 with threaded hole M10

Dimensions



Technical Data

General specifications

Suitable sensors and

Double sensors, -F25 series with actuator BT32...
 Double sensors, -F25K series with actuator BT32...
 Double sensors, -F31 series with actuator BT65...
 Double sensors, -F31K series with actuator BT65...
 Double sensors, -F31K2 series with actuator BT65...

Standard conformity

Standards

DIN EN ISO 5211 / DIN 3337



Mechanical specifications

Release date: 2023-09-19 Date of issue: 2023-09-25 Filename: 70134294_eng.pdf

Technical Data

Material	stainless steel 1.4301 / AISI 304 for plates and sheet metal bending parts	
Mass		366 g
General information		
Note	For the mounting set, an adapter plate and depending on this, and further accessories must be ordered.	
Scope of delivery	Three threaded pins with hexagon socket, various lengths 2 counter nuts 1 drive screw	

Matching System Components

	MHV-BT-F25/F31	Adapter plate for double sensors -F25/-F31 series
	MHV-BT-F31K/F31K2	Adapter plate for double sensors F31K/-F31K2 series