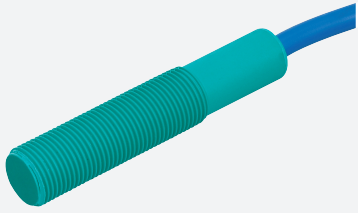


Capacitive sensor

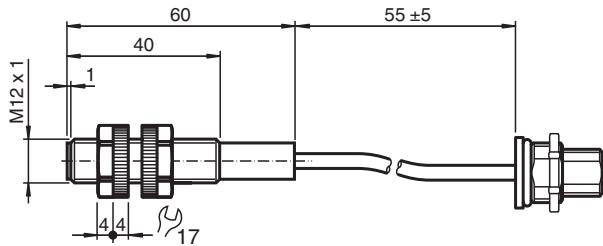
CJ4-12GK-N-Y235563



- 4 mm non-flush
- Customer-specific cable length
- Customer-specific connector



Dimensions



Technical Data

General specifications

Switching function		Normally open (NO)
Output type		NAMUR
Rated operating distance	s_n	4 mm
Installation		non-flush
Assured operating distance	s_a	0 ... 2.88 mm
Output type		2-wire

Nominal ratings

Installation conditions		
A		20 mm
B		80 mm
C		12 mm
F		70 mm
Nominal voltage	U_o	8.2 V (R_i approx. 1 k Ω)
Operating voltage	U_B	7 ... 12 V
Switching frequency	f	0 ... 1 Hz
Current consumption		
Measuring plate not detected		≤ 1 mA
Measuring plate detected		≥ 2.4 mA

Compliance with standards and directives

Standard conformity		
NAMUR		EN 60947-5-6:2000 IEC 60947-5-6:1999
Standards		EN IEC 60947-5-2

Release date: 2025-06-11 Date of issue: 2025-06-12 Filename: 70135026_eng.pdf

Technical Data

Approvals and certificates

IECEX approval	
Equipment protection level Ga	IECEX TUN 20.0014X
Equipment protection level Gb	IECEX TUN 20.0014X
Equipment protection level Da	IECEX TUN 20.0014X
ATEX approval	
Equipment protection level Ga	TÜV 03 ATEX 2003 X
Equipment protection level Gb	TÜV 03 ATEX 2003 X
Equipment protection level Da	TÜV 03 ATEX 2003 X
UL approval	
cULus Listed Circuitry: Class 2 Power Source Enclosure Type Rating: Type 1 Supply/Switching Voltage: 8.2 V DC	

Ambient conditions

Ambient temperature	-25 ... 70 °C (-13 ... 158 °F)
---------------------	--------------------------------

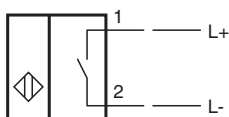
Mechanical specifications

Connection type	cable PVC , 55 mm with Connector, 99-3431-216-04, Binder
Core cross section	0.34 mm ²
Housing material	PBT
Sensing face	PBT
Degree of protection	IP68
Cable	
Bending radius	> 10 x cable diameter
Dimensions	
Length	60 mm
Diameter	12 mm

General information

Supplementary information	Note! When making the electrical connection, ensure that the sensor cable is protected against mechanical stress!
Use in the hazardous area	see instruction manuals

Connection



Installation Conditions

