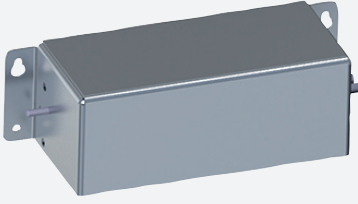


Accessory for IDM-Z2-*

HOLDER-BRACKET-SK-IDM-Z2-N0



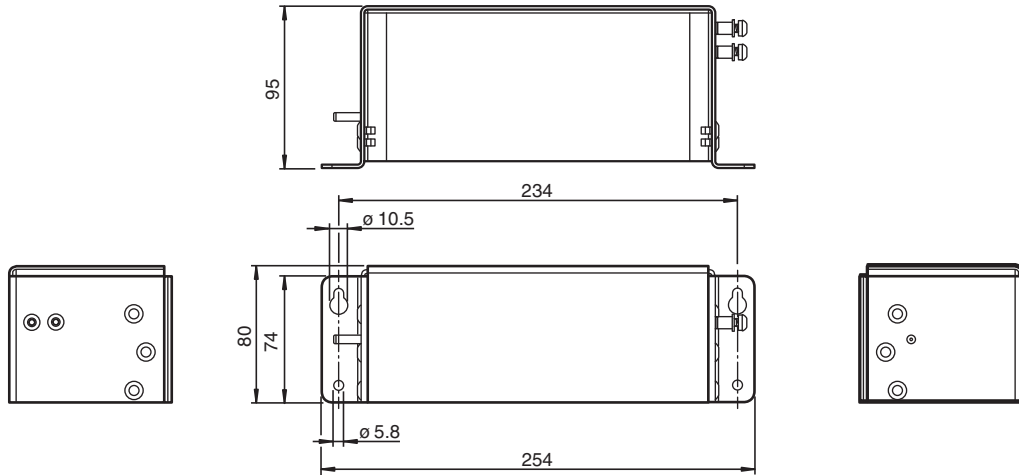
- Mounting bracket
- Simple and fast mounting

Bracket for wall mounting of the SK-IDM-Z2-J2-* supply cable

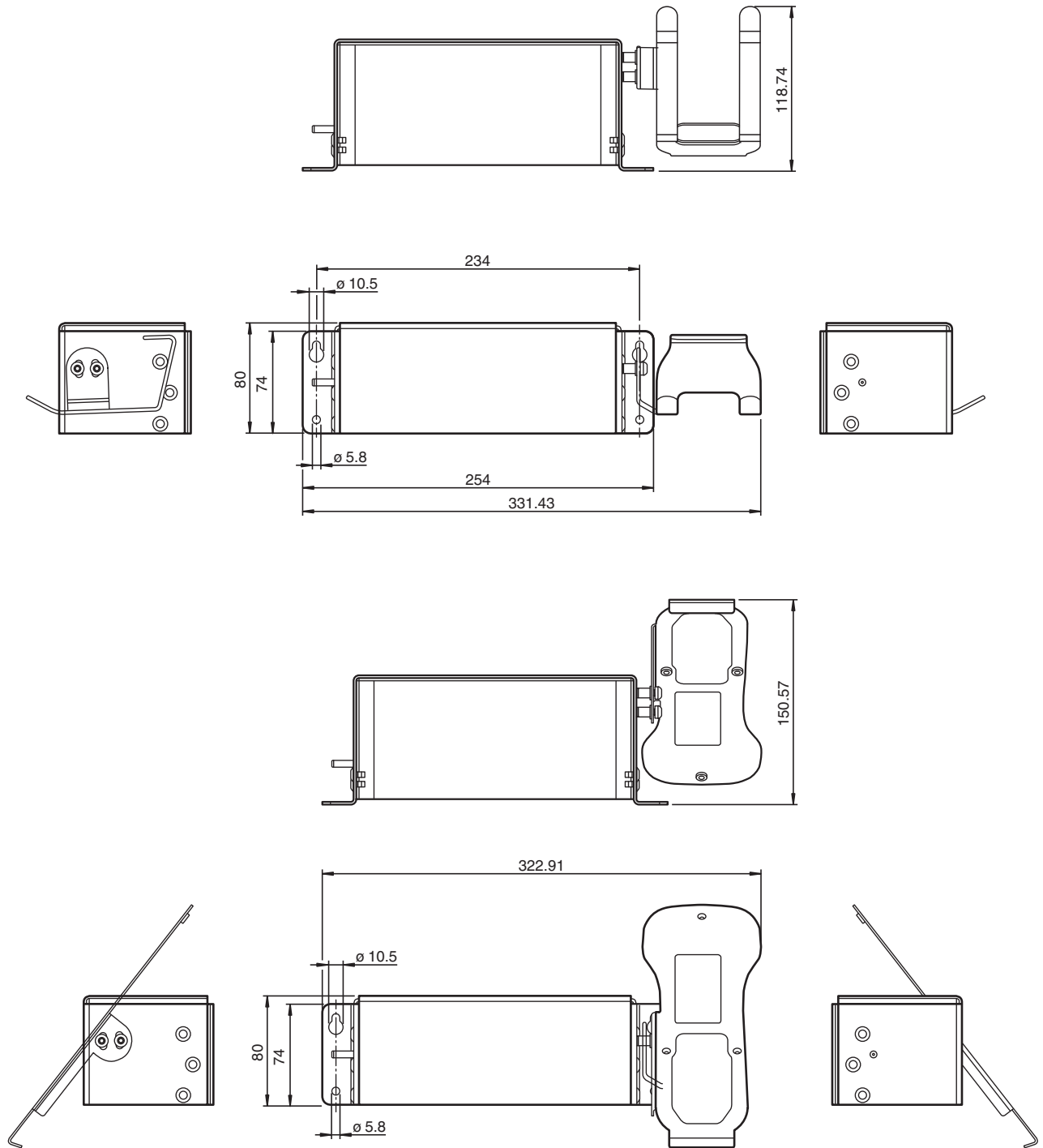
Function

The HOLDER-BRACKET-SK-IDM-Z2-N0 is an additional wall mount bracket designed for SK-IDM-Z2-J2-* supply cables. The SK-IDM-Z2-J2-* supply cables are not included and must be ordered separately.

Dimensions



Dimensions





Technical Data

Mechanical specifications

Material	AISI 304 1.4301 stainless steel
Mass	0.5 kg
Mounting	Suitable screws must be chosen by the installer.
Note	The SK-IDM-Z2-J2-* supply cables are not included and need to be ordered separately.

Release date: 2022-12-13 Date of issue: 2022-12-13 Filename: 70142693_eng.pdf

Accessories

	HOLDER-BRACKET-AG1-IDMx61-B-N0	Stainless steel bracket to mount IDM-Zx-x6x-B-Jx-BT-N0 base station to AG1 housing
	SCANNER-HOLDER-U1-AG1-N0	Stainless steel holder for for IDM-Z1- handheld readers, compatible with AG1 housing