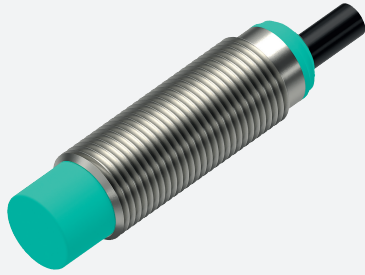
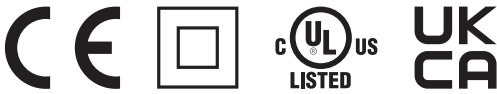


Inductive sensor NAN7-12GM40-U

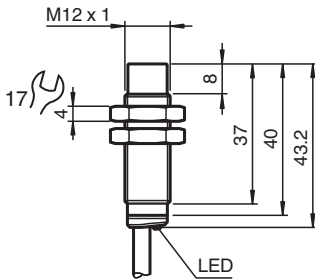


- Inductive analog sensor
- Output 0 V ... 10 V
- Measuring range 0 ... 7 mm
- Non-flush mountable
- Flexible use with versatile mounting opportunities

Inductive distance sensor with analog voltage output



Dimensions



Technical Data

General specifications

Output type	Analog voltage output	
Installation	non-flush	
Output polarity	DC	
Actuating element	mild steel, e. g. 1.0037, SR235JR (formerly St37-2) 24 mm x 24 mm x 1 mm	
Measuring range	0 ... 7 mm	
Output type	3-wire	
Nominal ratings		
Operating voltage	U_B	15 ... 30 V
Reverse polarity protection	reverse polarity protected	
Short-circuit protection	current limited	
Linearity error	± 3 % of full-scale value	
Temperature drift	± 10 % of full-scale value	
Repeat accuracy	± 1 % of full-scale value	
Recovery time	≤ 50 ms	
No-load supply current	I_0	12 mA
Status indicator	LED, yellow	
Functional safety related parameters		
MTTF _d	941 a	
Mission Time (T _M)	20 a	
Diagnostic Coverage (DC)	0 %	

Release date: 2025-02-25 Date of issue: 2025-02-25 Filename: 70145056-0003_eng.pdf

Technical Data

Analog output

Output type		0 ... 10 V
Slope of output characteristic		1.4 V / mm
Load resistor		$\geq 500 \Omega$
Settling time		≤ 100 ms

Conformity

PWIS conformity		VDMA 24364-C1/T100°C-W
-----------------	--	------------------------

Compliance with standards and directives

Standard conformity

Standards		EN IEC 60947-5-2 EN IEC 60947-5-7
-----------	--	--------------------------------------

Approvals and certificates

Protection class		II
Rated insulation voltage	U_i	30 V
Rated impulse withstand voltage	U_{imp}	500 V
UL approval		cULus Listed, General Purpose, Class 2 Power Source
CCC approval		CCC approval / marking not required for products rated ≤ 36 V

Ambient conditions

Ambient temperature		-25 ... 70 °C (-13 ... 158 °F)
Storage temperature		-40 ... 85 °C (-40 ... 185 °F)

Mechanical specifications

Connection type		cable
Housing material		brass , white bronze coated
Sensing face		PBT , green
Degree of protection		IP65 / IP67

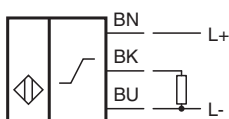
Cable

Wire end ferrules		yes
Cable diameter		4.3 mm \pm 0.15 mm
Bending radius		> 10 x cable diameter
Material		PVC
Color		black
Number of cores		3
Core cross section		0.34 mm ²
Length	L	2 m
Mass		80 g
Dimensions		
Length		43 mm
Diameter		12 mm
Mounting		with nuts, M12
Tightening torque		≤ 10 Nm

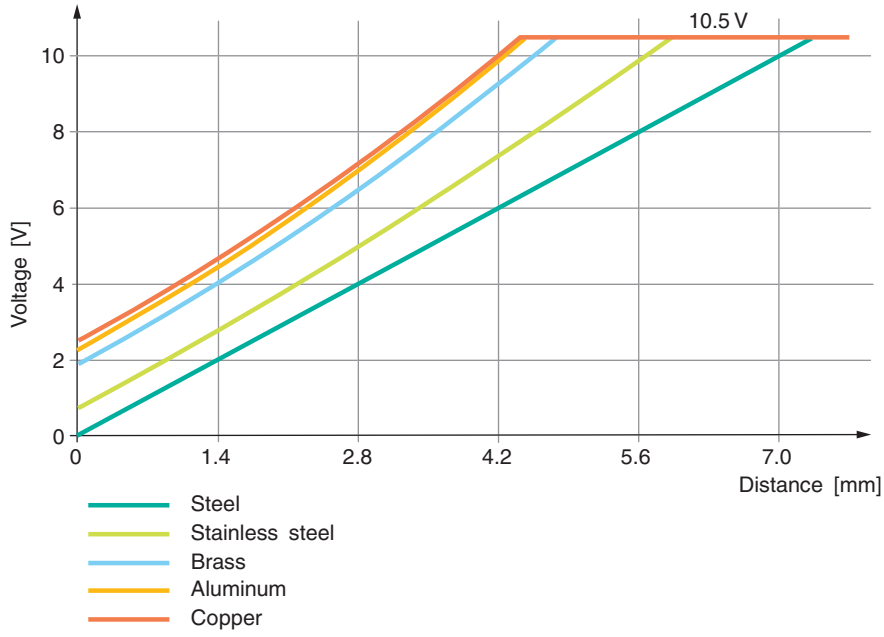
General information

Scope of delivery		2 self locking nuts in scope of delivery
-------------------	--	--

Connection



Characteristic Curve



Release date: 2025-02-25 Date of issue: 2025-02-25 Filename: 70145056-0003_eng.pdf