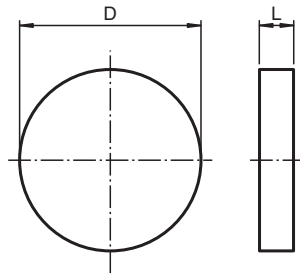


Insert for Pushbutton CFP.XR.SP

- Component for CFP pushbuttons
- Polyamide
- Color red
- Labeling '0'

Dimensions



Dimension values see data table.
Image and drawing are generic for this device type and may deviate from the specific variant.

Technical Data

Electrical specifications

Function	Insert for Pushbutton
Color	red
Labeling	0
Labeling color	white

Mechanical specifications

Material	Polyamide (PA)
Mass	0.6 g
Dimensions	
Diameter (D)	20 mm
Dimension (L)	1.5 mm

Ambient conditions

Ambient temperature	-40 ... 55 °C (-40 ... 131 °F)
---------------------	--------------------------------

General information

Supplementary information	For more information please contact Pepperl+Fuchs.
---------------------------	----------------------------------------------------

Release date: 2025-06-12 Date of issue: 2025-06-14 Filename: 70157970_eng.pdf

Technical Data

Enclosure type

LR* SR*.CS* GR.CS*

Release date: 2025-06-12 Date of issue: 2025-06-14 Filename: 70157970_eng.pdf