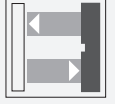




Diffuse mode sensor

RLK31-8-2500-IR/31/115b-Y8271

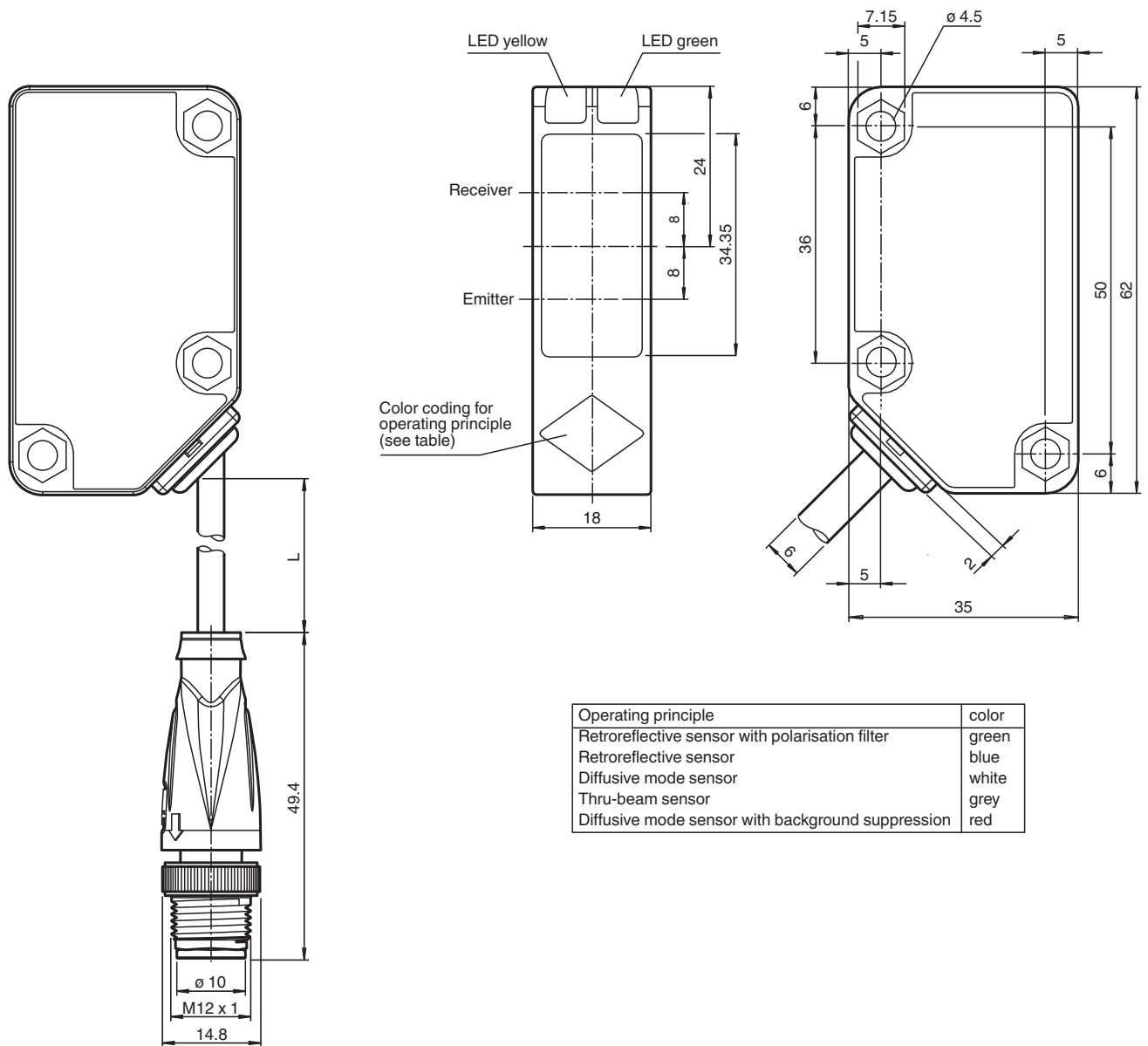


- Highly visible LED
- Relay output
- Version with relay's Common terminal tied to +UB
- Compact and stable housing

Diffuse mode sensor, plastic housing, 2500 mm adjustable detection range, DC version, infrared light, light on, relay contact output, fixed cable with M12 plug



Dimensions



Release date: 2025-05-07 Date of issue: 2025-05-07 Filename: 70168271_eng.pdf

Technical Data

General specifications

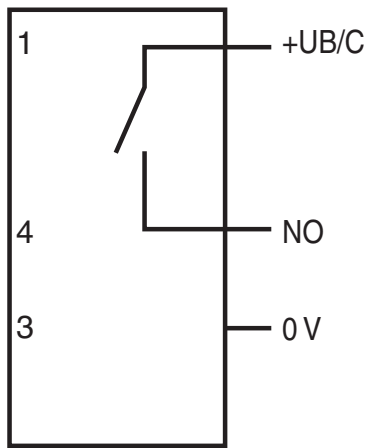
Detection range	0 ... 2500 mm adjustable
Reference target	standard white 200 mm x 200 mm
Light source	IRED
Light type	modulated infrared light , 850 nm
Polarization filter	no
Diameter of the light spot	approx. 50 mm at a distance of 2.5 m
Opening angle	2°

Technical Data

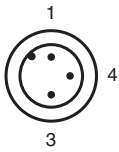
Ambient light limit		50000 Lux ; according to EN 60947-5-2
Functional safety related parameters		
MTTF _d		790 a
Mission Time (T _M)		20 a
Diagnostic Coverage (DC)		0 %
Indicators/operating means		
Operation indicator		LED green: power on
Function indicator		LED yellow, lights up with receiver lit
Control elements		Sensing range adjuster
Electrical specifications		
Operating voltage	U _B	12 ... 30 V DC
No-load supply current	I ₀	≤ 40 mA
Power consumption	P ₀	≤ 1.2 VA
Output		
Switching type		light-on
Signal output		relay, 1 NO
Switching voltage		12 ... 30 V DC
Switching current		max. 3 A
Switching power		DC: max. 90 W
Switching frequency	f	≤ 20 Hz
Response time		≤ 25 ms
Conformity		
Product standard		EN 60947-5-2
Ambient conditions		
Ambient temperature		-25 ... 55 °C (-13 ... 131 °F)
Storage temperature		-40 ... 70 °C (-40 ... 158 °F)
Mechanical specifications		
Degree of protection		IP67
Connection		fixed cable with M12 x 1 , 4-pin connector
Material		
Housing		Polycarbonate
Optical face		PMMA
Cable		
Length	L	150 mm
Mass		65 g
Dimensions		
Height		62 mm
Width		18 mm
Depth		35 mm

Connection

Option:



Connection Assignment

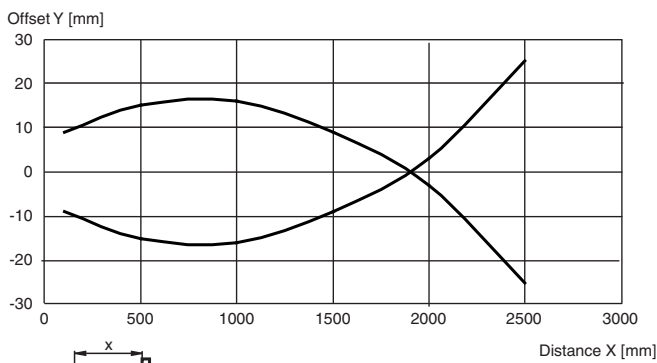


Wire colors in accordance with EN 60947-5-2

1	BN	(brown)
3	BU	(blue)
4	BK	(black)

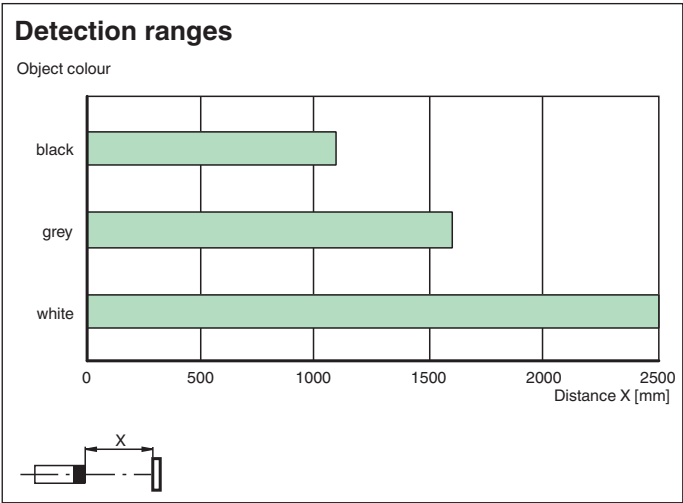
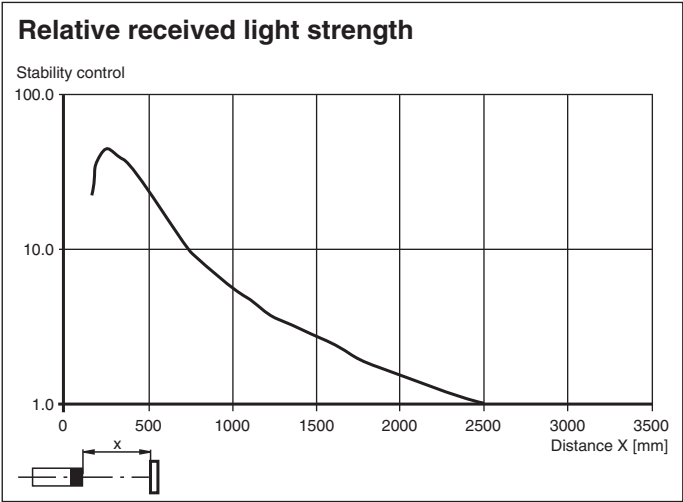
Characteristic Curve

Characteristic response curve



Release date: 2025-05-07 Date of issue: 2025-05-07 Filename: 70168271_eng.pdf

Characteristic Curve



Release date: 2025-05-07 Date of issue: 2025-05-07 Filename: 70168271_eng.pdf