

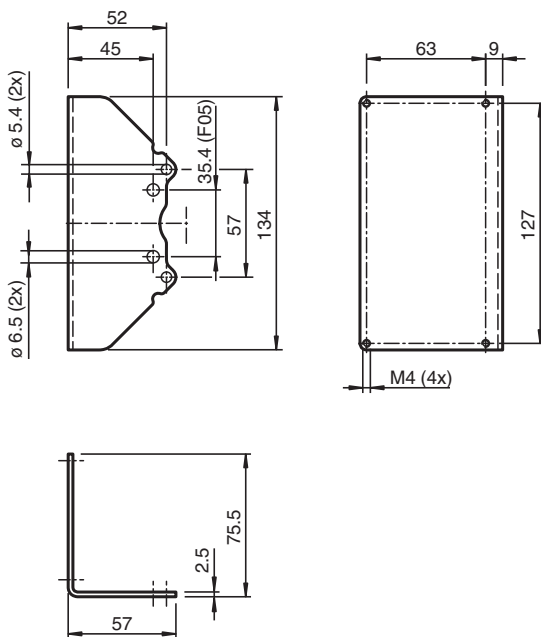


Mounting bracket MHV-WS-F406-F05-M5

- Simple mounting
- All-in-one stainless steel solution
- Mounting on manual valve from the lateral or from behind possible

Mounting angle for WILSEN.valve devices for attachment to adapter plate and mounting sets of the MHV-BT* series for manually operated valves

Dimensions



Technical Data

General specifications

Suitable components	WILSEN.valve Adapter plate for dual sensors -F25/-F31 series Adapter plate for dual sensors F31K/-F31K2 series
---------------------	--

Standard conformity

Standards	DIN EN ISO 5211 / DIN 3337
-----------	----------------------------

Mechanical specifications

Material	stainless steel 1.4301 / AISI 304
Mass	295 g
Dimensions	
Height	75.5 mm
Width	134 mm

Technical Data

Length	57 mm
General information	
Note	For the mounting bracket, we offer other suitable accessories such as adapter plates and mounting sets for manual operated valves.
Scope of delivery	For mounting of the mounting bracket to the adapter plate: 2 allen head screws M5 x 8 (for mounting from behind) 2 allen head screws M6 x 10 (for lateral mounting)