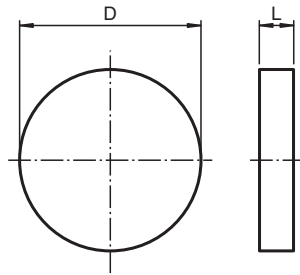




## Insert for Pushbutton CFP.XQ.SP

- Component for CFP pushbuttons
- Polyamide
- Color black
- Labeling 'III'

### Dimensions



Dimension values see data table.  
Image and drawing are generic for this device type and may deviate from the specific variant.

### Technical Data

#### Electrical specifications

Function	Insert for Pushbutton
Color	black
Labeling	III
Labeling color	white

#### Mechanical specifications

Material	Polyamide (PA)
Mass	0.6 g
Dimensions	
Diameter (D)	20 mm
Dimension (L)	1.5 mm

#### Ambient conditions

Ambient temperature	-40 ... 55 °C (-40 ... 131 °F)
---------------------	--------------------------------

#### General information

Supplementary information	For more information please contact Pepperl+Fuchs.
---------------------------	--

Release date: 2025-06-12 Date of issue: 2025-06-14 Filename: 70173007\_eng.pdf

## Technical Data

Enclosure type

LR\* SR\*.CS\* GR.CS\*

Release date: 2025-06-12 Date of issue: 2025-06-14 Filename: 70173007\_eng.pdf