



### Model Number

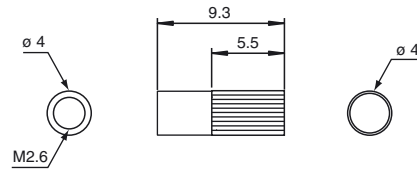
**K-LA01**

Collimation lens, increases operating range by up to four times, M2.6 thread

### Features

- Collimation lens
- Thread M2.6
- increases operating range by up to four times

### Dimensions



### Technical data

#### Ambient conditions

Ambient temperature -30 ... 200 °C (-22 ... 392 °F)

#### Mechanical specifications

Material Stainless steel

Mass approx. 1 g

#### Suitable series

Series Fiberoptics