

Photoelectric slot sensor GL2-P/153



- Miniature design
- Optimized for the detection of small parts
- High switching frequency

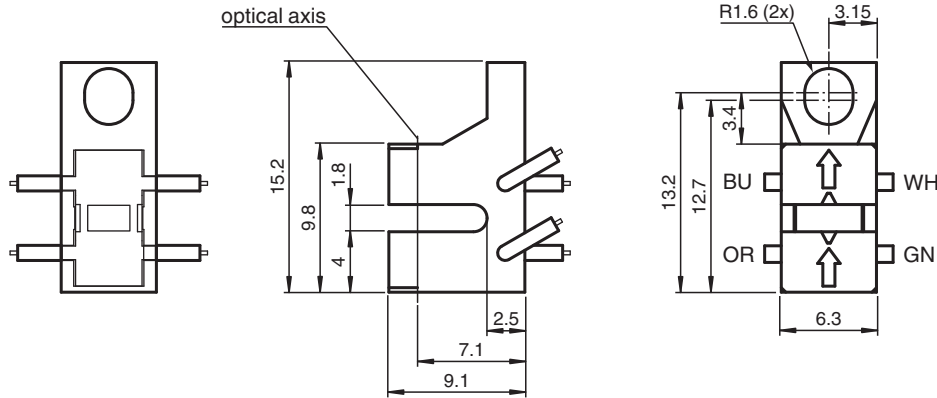
Miniature photoelectric slot sensor for the detection of small parts, P-shaped housing design, 1.8 mm slot width, infrared light, NPN outputs, fixed cable



Function

The GL2 & GL3 miniature slot sensor is the smallest slot sensor in its family optimized to the requirements in semiconductors industry for small part detection. A wide voltage range of 5 V DC ... 30 V DC and a extreme fast response time of 25 μ s stands for the quality of this sensor. The GL2 & GL3 sensor can be directly connected to a comparator or Schmitt-trigger circuit. Due to a variety of different housings and an optimized housing concept offers the sensor a maximum of freedom in a crowded mounting environment.

Dimensions



Technical Data

General specifications

Light source	IRED , 940 nm
Light type	IRED
Target size	0.2 x 2.6 mm
Slot width	1.8 mm
Slot depth	1.8 mm
Ambient light limit	1000 Lux

Functional safety related parameters

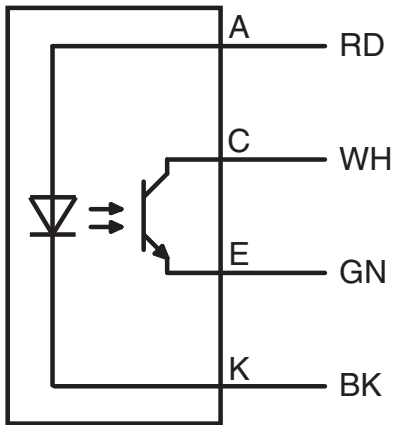
MTTF _d	44332 a
Mission Time (T _M)	20 a
Diagnostic Coverage (DC)	0 %

Release date: 2024-06-24 Date of issue: 2024-06-24 Filename: 803747_eng.pdf

Technical Data

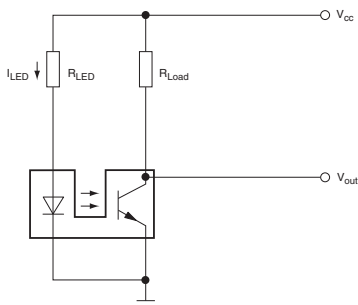
Electrical specifications		
Operating voltage	U_B	5 ... 30 V DC
Ripple		10 %
Emitter		
Light type		940 nm IR light
Forward voltage	V_F	< 1.6 V
Peak forward voltage	V_{FM}	30 V
Forward current	I_F	50 mA
Reverse voltage	V_R	5 V
Reverse current	I_R	$\leq 10 \mu A$
Power dissipation		75 mW
Receiver		
Output type		NPN
C-E breakdown voltage	V_{CEO}	30 V
E-C breakdown voltage	V_{ECO}	5 V
Collector dark current	I_{CEO}	< 1 μA
Collector DC current	I_C	20 mA
Power dissipation	P_D	75 mW
Output		
Signal output		1 NPN , photo transistor
Switching voltage		max. 30 V DC
Switching current		20 mA
Response time		25 μs
Approvals and certificates		
EAC conformity		TR CU 020/2011
CCC approval		CCC approval / marking not required for products rated $\leq 36 V$
Ambient conditions		
Ambient temperature		-40 ... 85 °C (-40 ... 185 °F)
Storage temperature		-40 ... 85 °C (-40 ... 185 °F)
Mechanical specifications		
Core cross section		4 x 0.08 mm ²
Degree of protection		IP30
Connection		610 mm, PVC cable , Individual colored wires
Material		
Housing		PC
Mass		4 g
Dimensions		
Height		15.2 mm
Width		6.3 mm
Depth		9.1 mm

Connection Assignment



Release date: 2024-06-24 Date of issue: 2024-06-24 Filename: 803747_eng.pdf

Connection example



3 simple steps:

- Choose power supply
- Choose LED current (set resistor R_{LED})
- Choose load current (set resistor R_{LOAD})

Possible connections

<p>Circuit with voltage comparator</p>	<p>Circuit with additional transistor</p>
<p>Circuit with Op Amp</p>	<p>Circuit with PNP transistor output</p>

Release date: 2024-06-24 Date of issue: 2024-06-24 Filename: 803747_eng.pdf