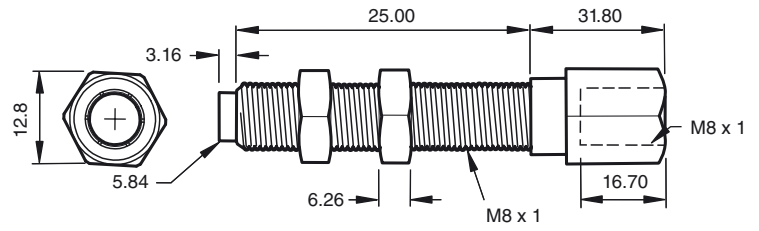




Dimensions



Technical data

Mechanical specifications

Material	Heat-treated alloy steel
----------	--------------------------

Model Number

ES-08-25

Mounting adapter

Features

- End stop adapter
- For 8 mm diameter sensors

Application

The end stop adapter turns a standard 8 mm diameter shielded inductive sensor into a durable mechanical stop switch. These adapters are useful for applications where end-of-travel signals are required. Sensor activation point is dependent upon the insertion depth (0 - 1.5 mm).