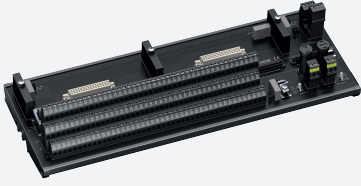


HART Termination Board

HiS1132/CON8-H-LTX-02



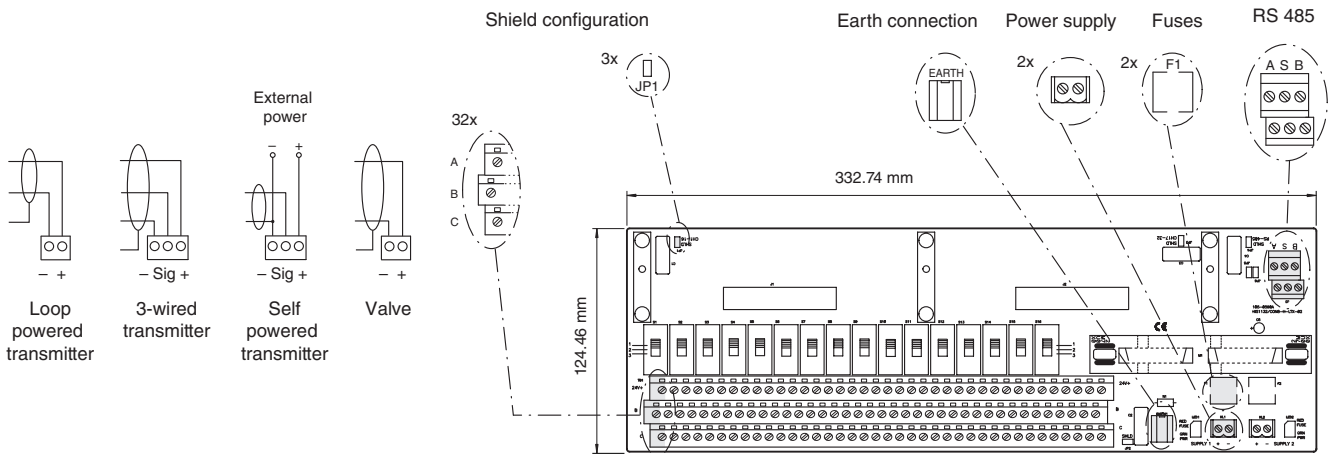
- APACS/QUADLOG replacement FTA
- Bailey Infi 90 replacement FTA
- Product connector; PCS wiring
- Easy switch selectable configurations for AO and AI



Function

The Termination Board is designed for easy HiDMux2700 Multiplexer integration with the Siemens Moore APACS/Quadlog system or the Bailey Infi 90 system. With the Multiplexer integrated into the board and plug-n-play options for choosing the correct DCS connection through the Interface Adapter Card (IAC), this provides a clean and clear access to the HART signals, while reducing the need for marshalling cabinets and reduce equipment that require extra cabinet space. The HART Termination Board provides a robust solution for on-line HART communications, interfaces up to 32 field located HART devices, and, it allows the user to replace standard DCS field termination panels.

Connection



Technical Data

Supply	
Rated voltage	U_r 20 ... 30 V DC
Fusing	3.15 A , 5 x 20 mm (0.2 x 0.8 inch)
Power dissipation	0.7 W , with Multiplexer
Reverse polarity protection	yes
HART signal channels (intrinsically safe)	
HART signal channels	
Number of channels	32 unbalanced signal loops
Redundancy	
Supply	yes

Release date: 2023-05-31 Date of issue: 2023-05-31 Filename: 905735_eng.pdf

Technical Data

Galvanic isolation	
HART signal channels	30 V DC
Ambient conditions	
Ambient temperature	0 ... 55 °C (32 ... 131 °F)
Relative humidity	5 ... 90 %, non-condensing
Mechanical specifications	
Core cross section	2.5 mm ² (16 AWG)
Connection	field side: fixed screw terminals control side: PCS-specified connector RS 485 interface: removable screw terminals power: removable screw terminals
Mass	approx. 700 g
Dimensions	333 x 125 x 208 mm (13.1 x 4.9 x 8.2 inch) (W x H x D) , depth including module assembly with HiDMux2700
Mounting	DIN rail mounting
General information	
Supplementary information	Observe the certificates, declarations of conformity, instruction manuals, and manuals where applicable. For information see www.pepperl-fuchs.com .

Additional Information

Configuration

Jumper	Channels	Galvanic grounding	Capacitive grounding
1	DCS side channels 1 ... 16	closed	opened
2	Field side channels 1 ... 32	closed	opened
3	DCS side channels 17 ... 32	closed	opened
4	RS-485	closed	opened

Function	Switch position	Terminals
4 ... 20 mA mains powered current sources	1	B, C
4 ... 20 mA loop powered	2	24 V, C
1 ... 5 V DC	3	B, C

Interface Adapter Cards

Type	Channels/function
Moore APACS/QUADLOG	
IA-MP-SAM-NIS (1 per 1132)	32 AI/AO inputs
IA-MP-VIM-ISI (2 per 1132)	32 AI inputs
IA-MP-EAM-ISI (2 per 1132)	32 AI inputs
IA-MP-HFM-ISI (2 per 1132)	32 AI inputs
Bailey Infi 90	
IA-BA-AI-01-I-R (2 per 1132)	32 AI inputs HART Boostin
IA-BA-AI-03-BC (2 per 1132)	32 redundant AI inputs
IA-BA-AO-HFT-01 (2 per 1132)	32 HART filtered AO inputs