



Diffuse mode sensor ML17-8-450/115/120

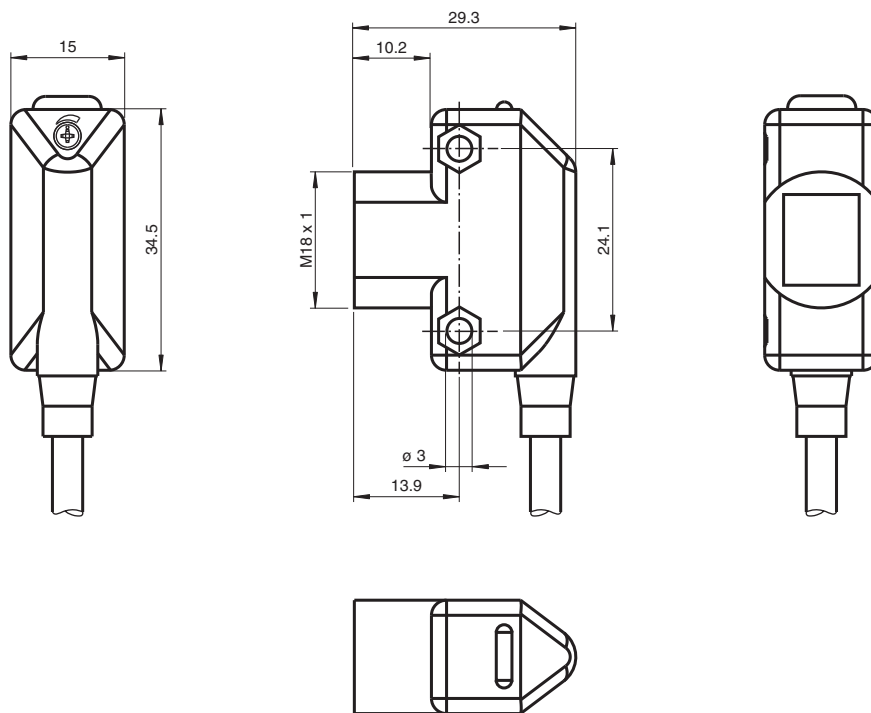


- Compact, versatile housing
- 360° high visibility LEDs
- PNP output
- 2 m cable length

Diffuse mode sensor



Dimensions



Technical Data

General specifications

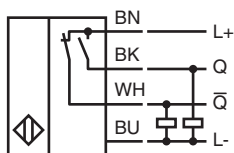
| | |
|------------------|---------------------------------|
| Detection range | 10 ... 450 mm |
| Adjustment range | 60 ... 450 mm |
| Reference target | standard white, 100 mm x 100 mm |
| Light source | IRED |

Release date: 2022-03-30 Date of issue: 2022-03-30 Filename: 905796_eng.pdf

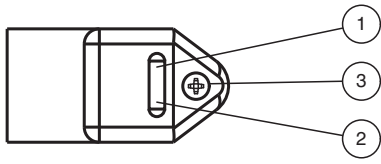
Technical Data

| | | |
|-----------------------------------|--|--------------------------|
| Light type | modulated infrared light , 950 nm | |
| Ambient light limit | ≤ 10000 Lux | |
| Indicators/operating means | | |
| Operation indicator | LED green | |
| Function indicator | LED yellow, lights up with receiver lit | |
| Control elements | Sensing range adjuster | |
| Electrical specifications | | |
| Operating voltage | U_B | 10 ... 30 V DC , class 2 |
| Ripple | max. 10 % | |
| No-load supply current | I_0 | < 25 mA |
| Time delay before availability | t_v | ≤ 200 ms |
| Output | | |
| Switching type | light/dark on | |
| Signal output | 2 PNP, short-circuit protected, reverse polarity protected | |
| Switching voltage | max. 30 V DC | |
| Switching current | max. 100 mA per output | |
| Voltage drop | U_d | ≤ 2 V DC |
| Switching frequency | f | 500 Hz |
| Response time | ≤ 1 ms | |
| Conformity | | |
| Product standard | EN 60947-5-2 | |
| Approvals and certificates | | |
| EAC conformity | TR CU 020/2011 | |
| UL approval | cULus | |
| CCC approval | CCC approval / marking not required for products rated ≤36 V | |
| Ambient conditions | | |
| Ambient temperature | -20 ... 55 °C (-4 ... 131 °F) | |
| Storage temperature | -20 ... 70 °C (-4 ... 158 °F) | |
| Mechanical specifications | | |
| Housing width | 15 mm | |
| Housing height | 34.5 mm | |
| Degree of protection | IP67 | |
| Connection | 2 m PVC cable | |
| Material | | |
| Housing | ABS | |
| Optical face | Acrylic | |
| Mass | approx. 40 g | |

Connection

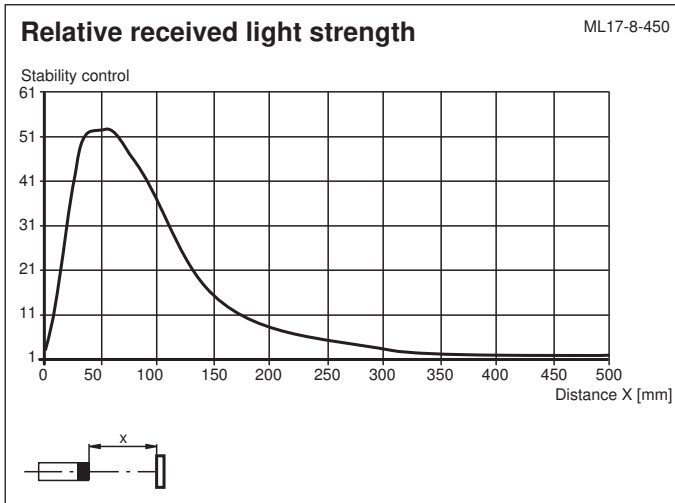
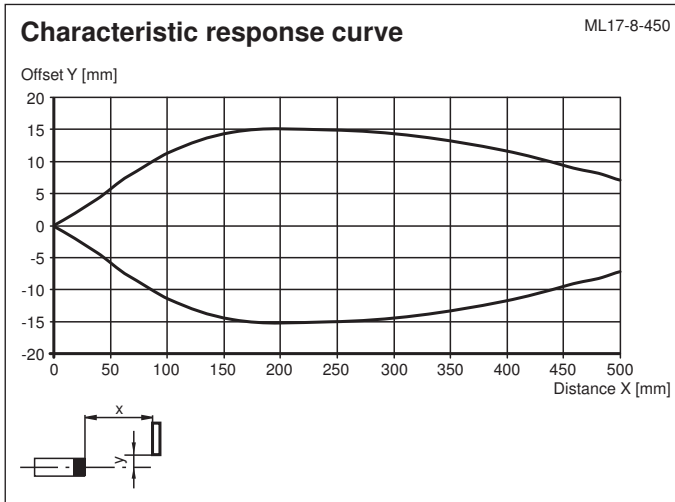


Assembly





| | | |
|---|------------------------|--------|
| 1 | Signal display | yellow |
| 2 | Operating display | green |
| 3 | Sensitivity adjustment | |

Characteristic Curve



Accessories

| | | |
|---|-------------------|------------------|
|  | OMH-ML17 | Mounting bracket |
|  | OMH-ML17-1 | Mounting bracket |

Release date: 2022-03-30 Date of issue: 2022-03-30 Filename: 905796_eng.pdf