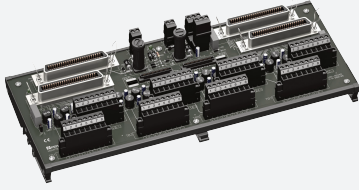


HART Termination Board

HiSHPTB/32/HONB-AO-R-01



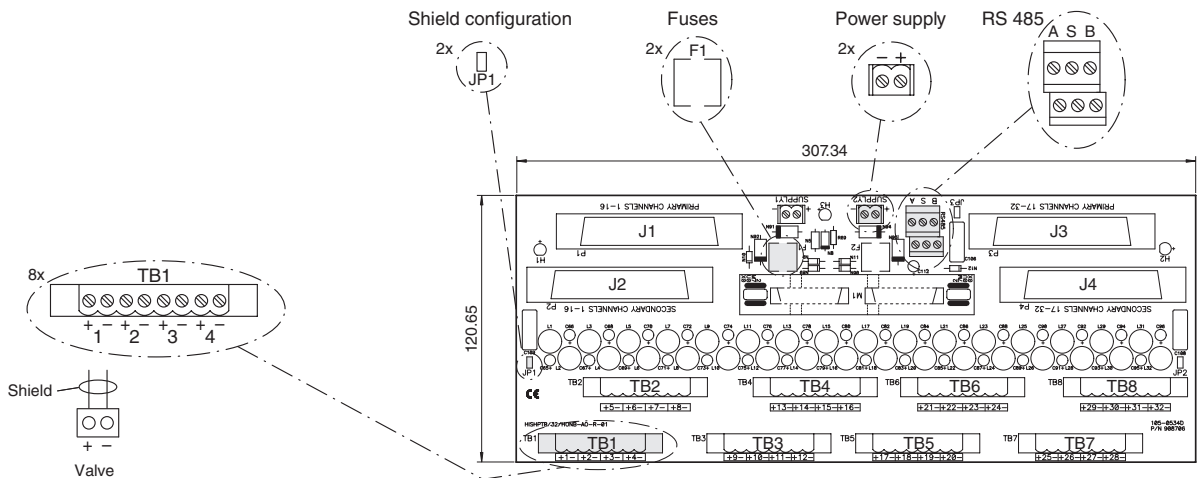
- TDC 3000 replacement FTA
- Short-circuit protected
- HART analog output filters
- Redundant PCS wirings
- Redundant power supply connections
- Field terminal blocks that are Honeywell FTA compatible
- Honeywell "B" size footprint



Function

The Termination Board is a Field Termination Assembly (FTA) that is designed as a replacement for the TDC3000 redundant analog input FTA. The FTA in conjunction with a Multiplexer HiDMux2700 will extract the digital HART data from standard 4 mA ... 20 mA loops. The HART Termination Board interfaces up to 32 field located HART devices to a DCS.

Connection



Technical Data

Supply			
Rated voltage	U_r	24 V DC	
Fusing		315 mA , 5 x 20 mm (0.2 x 0.8 inch)	
Power dissipation		0.7 W , with Multiplexer	
Reverse polarity protection		yes	
HART signal channels (intrinsically safe)			
HART signal channels			
Number of channels		32 unbalanced signal loops	
Redundancy			
Supply		yes	
Galvanic isolation			
HART signal channels		30 V DC	
Ambient conditions			

Release date: 2023-05-31 Date of issue: 2023-05-31 Filename: 907308_eng.pdf

Technical Data

Ambient temperature	0 ... 55 °C (32 ... 131 °F)
Relative humidity	5 ... 90 %, non-condensing
Mechanical specifications	
Core cross section	2.5 mm ² (16 AWG)
Connection	field side: 5.08 mm removable screw terminals control side: 50-pin Centronics plug RS-485 interface: 5.08 mm removable screw terminals power: removable screw terminals
Mass	approx. 500 g
Dimensions	333 x 127 x 190 mm (13.1 x 5 x 7.5 inch) (W x H x D) , depth including module assembly with HiDMux2700
Mounting	DIN rail mounting
General information	
Supplementary information	Observe the certificates, declarations of conformity, instruction manuals, and manuals where applicable. For information see www.pepperl-fuchs.com .

Additional Information

Product Versions

HiSHPTB/32/HONB-AO-R-01	Version for panel mounting
HiSHPTB/32/HONB-AO-R-01-DIN	Version for DIN rail mounting

Connection Assignment

Terminal block	Channels	Connection
TB1	1 ... 4	(+, -)
TB2	5 ... 8	(+, -)
TB3	9 ... 12	(+, -)
TB4	13 ... 16	(+, -)
TB5	17 ... 20	(+, -)
TB6	21 ... 24	(+, -)
TB7	25 ... 28	(+, -)
TB8	29 ... 32	(+, -)

Configuration

Connector	Channels
J1	1 ... 16, primary
J2	1 ... 16, sekundary
J3	17 ... 32, primary redundant
J4	17 ... 32, sekundary redundant

Jumper	Analog ouput redundant	Galvanic grounding	Capacitive grounding
JP1	DCS side channels 1 ... 16 (primary and secondary)	closed	opened
JP2	DCS side channels 17 ... 32 (primary and secondary)	closed	opened
JP3	RS-485	closed	opened

Honeywell IOP Interface

- MU-PAOY22