



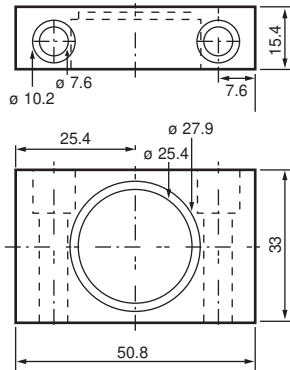
RFID Transponder

IPC03-20CT

- Battery-free data carrier
- 928 bits memory available
- 32 bit fixcode
- Readable and writable from both sides
- Degree of protection IP67 / IP68 / IP69K
- Potted housing

Data carrier

Dimensions



Technical Data

General specifications

Operating frequency	125 kHz
Transfer rate	2 kBit/s

Memory

Chip Type	EM4450 Titan (EM Microelectronic)
EEPROM	928 Bit
Read cycles	unlimited
Write cycles	> 100000
Data retention period	10 years at 55 °C (131 °F)

Standard conformity

RFID	ISO/IEC 18000-2
------	-----------------

Ambient conditions

Ambient temperature	-25 ... 70 °C (-13 ... 158 °F)
Storage temperature	-20 ... 85 °C (-4 ... 185 °F)

Mechanical specifications

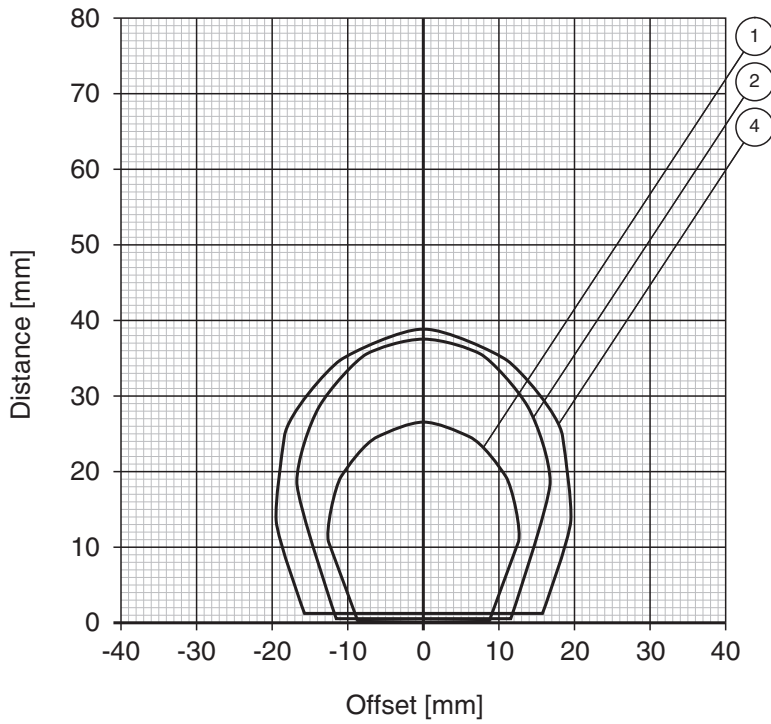
Housing length	50.8 mm
Housing width	33 mm
Housing height	15.4 mm
Degree of protection	IP68 / IP69K
Material	
Housing	Nylotron
Encapsulation compound	Epoxy

Release date: 2023-08-07 Date of issue: 2023-08-07 Filename: 909104_eng.pdf

Technical Data

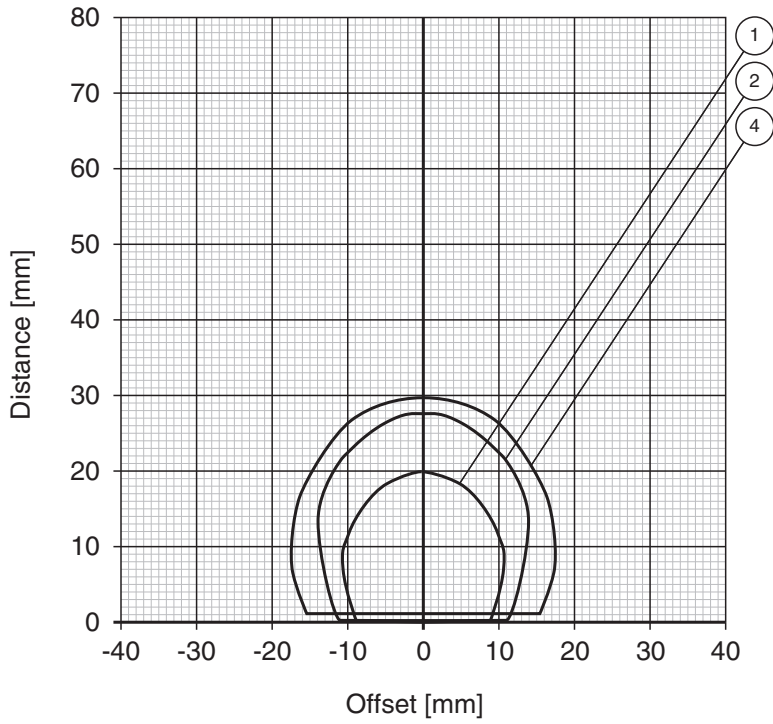
Installation		
On metal		yes
In air		yes
Mass		31 g
Construction type		Rectangular type

Reading range in air IPC03-24



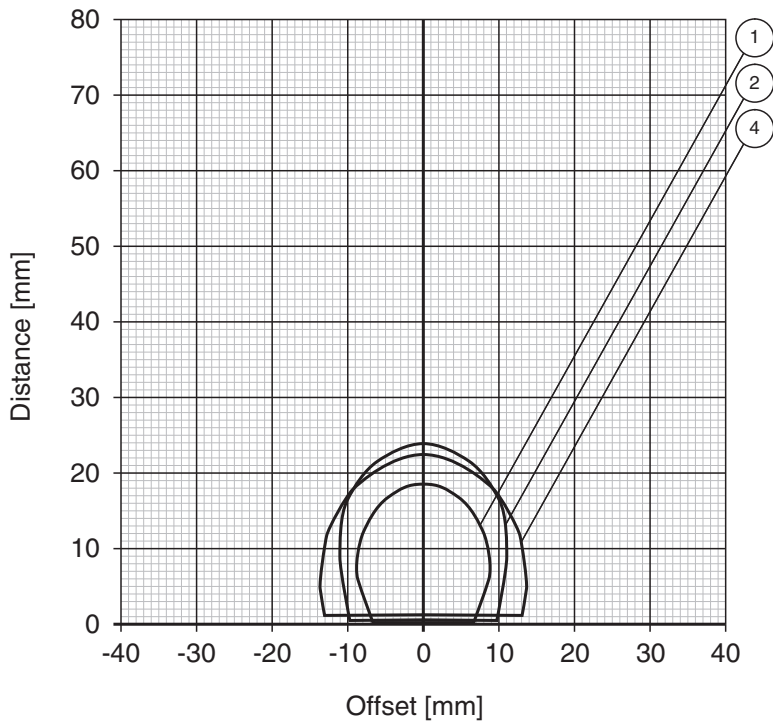
Release date: 2023-08-07 Date of issue: 2023-08-07 Filename: 909104_eng.pdf

Writing range in air IPC03-24



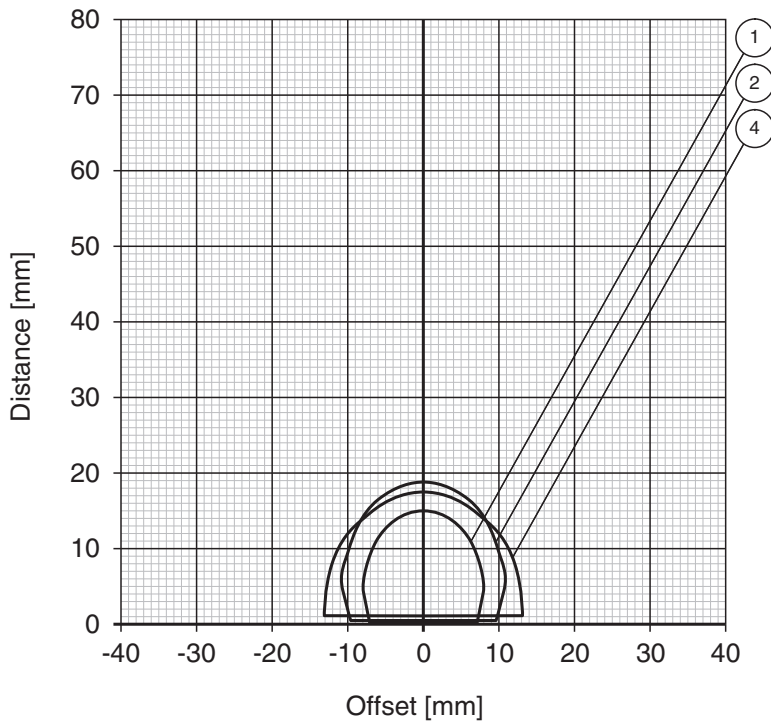
Release date: 2023-08-07 Date of issue: 2023-08-07 Filename: 909104_eng.pdf

Reading range mounted flush in aluminium IPC03-24



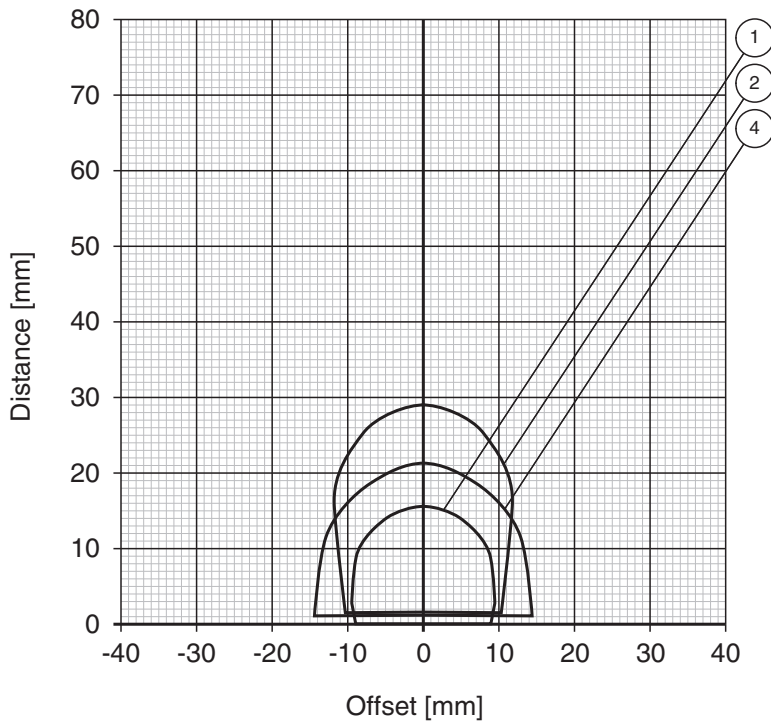
Release date: 2023-08-07 Date of issue: 2023-08-07 Filename: 909104_eng.pdf

Writing range mounted flush in aluminium IPC03-24



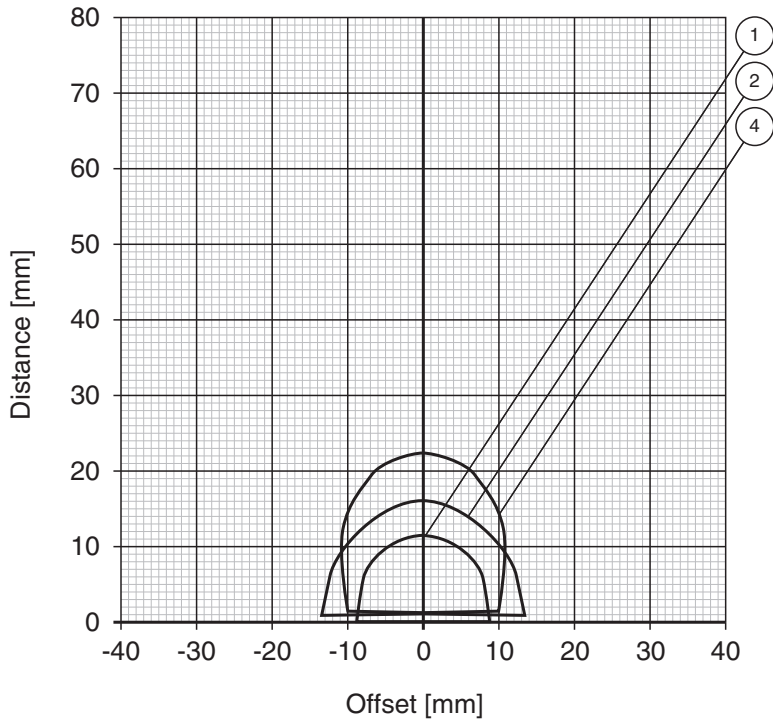
Release date: 2023-08-07 Date of issue: 2023-08-07 Filename: 909104_eng.pdf

Reading range mounted flush in steel IPC03-24



Release date: 2023-08-07 Date of issue: 2023-08-07 Filename: 909104_eng.pdf

Writing range mounted flush in steel IPC03-24



- | | | | |
|---------------|-------------|--------------|--------------|
| ① IPH-18GM-V1 | ③ IPH-F61 | ⑤ IPH-FP-V1 | ⑦ IPT1-FP-V1 |
| ② IPH-30GM-V1 | ④ IPH-L2-V1 | ⑥ IPH-F15-V1 | |

Mounting

The surface containing the text must face the read/write head.