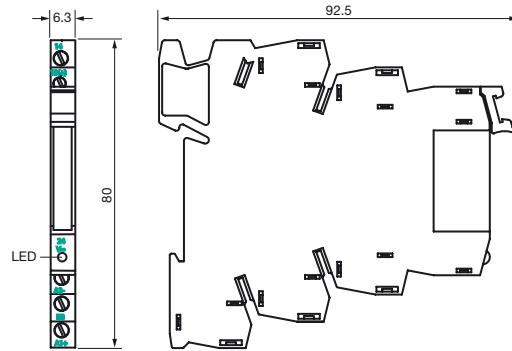
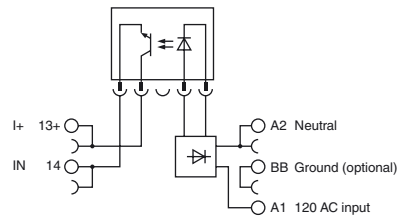




Dimensions



Electrical connection



Model number

VAZ-PLC-OSC-120UC/48DC/100/SEN

Optocoupler to convert 120 V inputs to 24 VDC

Features

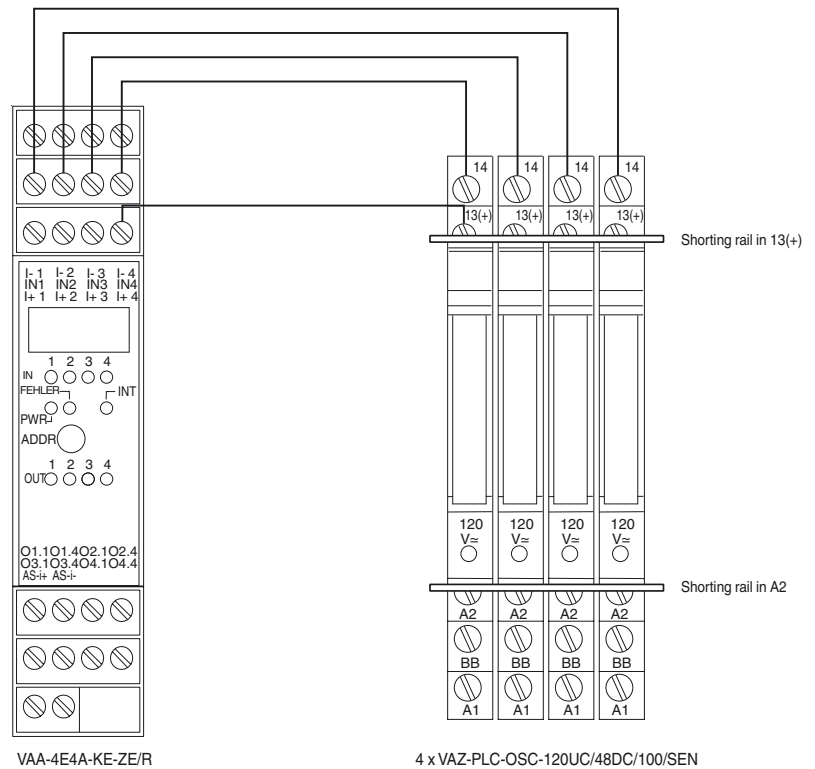
- AC or DC
- Converts any 120 V input signal to 24 V DC
- Narrow 6.3 mm housing

Accessories

VAZ-FBST 500-PLC GY

Shorting rail for use with VAZ-PLC-OSC-120UC/48DC/100/SEN

Electrical connection



Technical data

General specifications

Description Optocoupler to convert 120 V inputs to 24 VDC

Input

Voltage	96 ... 132 V AC / 88 ... 121 V DC
Input current	3.5 mA
Signal delay	6 ms
Signal frequency	10 Hz

Output

Current limit 100 mA

ase date: 2013-05-21 15:48 Date of issue: 2014-01-13 910154\_eng.xml

Current	approx. 0 mA
---------	--------------

Voltage	3 ... 48 V DC
---------	---------------

Voltage drop	$U_d \leq 1 \text{ V}$
--------------	------------------------

**Mechanical specifications**

Protection degree	IP20
-------------------	------

Connection	Terminals
------------	-----------