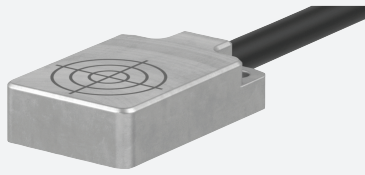


Inductive sensor

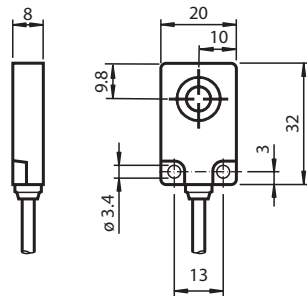
NMB6-F104M-E1-FE



- Sensing range 6 mm
- Ferrous targets
- Stainless steel sensing face
- NPN version



Dimensions



Technical Data

General specifications		
Switching function		Normally closed (NC)
Output type		NPN
Rated operating distance	s_n	6 mm
Installation		flush
Assured operating distance	s_a	0 ... 4.86 mm
Actuating element		Ferrous targets
Reduction factor r_{Al}		0
Reduction factor r_{Cu}		0
Reduction factor r_{304}		0.6 ... 0.8
Reduction factor r_{St37}		1
Output type		3-wire
Nominal ratings		
Operating voltage	U_B	10 ... 30 V DC
Switching frequency	f	20 Hz
Hysteresis	H	5 ... 15 typ. 10 %
Reverse polarity protection		reverse polarity protected

Release date: 2025-06-10 Date of issue: 2025-06-10 Filename: 915186_eng.pdf

Technical Data

Short-circuit protection		yes
Voltage drop	U_d	$\leq 2 \text{ V}$
Operating current	I_L	$\leq 100 \text{ mA}$
Current consumption		$\leq 10 \text{ mA}$
Off-state current	I_r	$\leq 10 \mu\text{A}$
Indicators/operating means		
Operation indicator		LED red: Output (rear visible)
Standard conformity		
Standards		EN 60947-5-2:2007 IEC 60947-5-2:2007
Approvals and certificates		
UL approval		cULus Listed Load Type: General Purpose Circuitry: Class 2 Power Source Enclosure Type Rating: Type 1 Supply/Switching Voltage: 30 V DC Output Switching Current: 100 mA
CCC approval		CCC approval / marking not required for products rated $\leq 36 \text{ V}$
Ambient conditions		
Ambient temperature		$-25 \dots 70 \text{ }^\circ\text{C}$ ($-13 \dots 158 \text{ }^\circ\text{F}$)
Mechanical specifications		
Connection type		cable
Housing material		Stainless steel 1.4305 / AISI 303
Degree of protection		IP67
Cable		
Wire end ferrules		yes
Cable diameter		$4.8 \text{ mm} \pm 0.2 \text{ mm}$
Bending radius		$> 10 \times \text{cable diameter}$
Material		PUR
Color		black
Number of cores		3
Core cross section		0.34 mm^2
Length	L	2 m
Dimensions		
Height		8 mm
Width		20 mm
Length		32 mm

Connection

