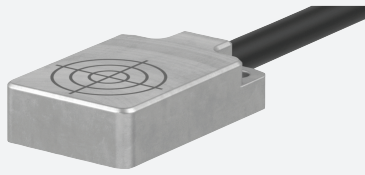


# Inductive sensor

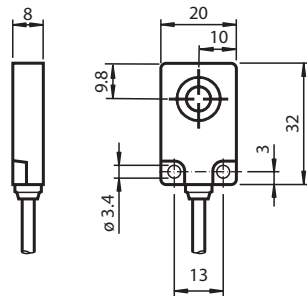
## NMB6-F104M-E3-FE



- Sensing range 6 mm
- Ferrous targets
- Stainless steel sensing face
- PNP version



### Dimensions



### Technical Data

#### General specifications

Switching function		Normally closed (NC)
Output type		PNP
Rated operating distance	$s_n$	6 mm
Installation		flush
Assured operating distance	$s_a$	0 ... 4.86 mm
Actuating element		Ferrous targets
Reduction factor $r_{Al}$		0
Reduction factor $r_{Cu}$		0
Reduction factor $r_{304}$		0.6 ... 0.8
Reduction factor $r_{St37}$		1
Output type		3-wire

#### Nominal ratings

Operating voltage	$U_B$	10 ... 30 V DC
Switching frequency	$f$	20 Hz
Hysteresis	$H$	5 ... 15 typ. 10 %
Reverse polarity protection		reverse polarity protected

Release date: 2025-06-10 Date of issue: 2025-06-10 Filename: 915188\_eng.pdf

## Technical Data

Short-circuit protection		yes
Voltage drop	$U_d$	$\leq 2 \text{ V}$
Operating current	$I_L$	$\leq 100 \text{ mA}$
Current consumption		$\leq 10 \text{ mA}$
Off-state current	$I_r$	$\leq 10 \mu\text{A}$
<b>Indicators/operating means</b>		
Operation indicator		LED red: Output ( rear visible )
<b>Standard conformity</b>		
Standards		EN 60947-5-2:2007 IEC 60947-5-2:2007
<b>Approvals and certificates</b>		
UL approval		cULus Listed Load Type: General Purpose Circuitry: Class 2 Power Source Enclosure Type Rating: Type 1 Supply/Switching Voltage: 30 V DC Output Switching Current: 100 mA
CCC approval		CCC approval / marking not required for products rated $\leq 36 \text{ V}$
<b>Ambient conditions</b>		
Ambient temperature		$-25 \dots 70 \text{ }^\circ\text{C}$ ( $-13 \dots 158 \text{ }^\circ\text{F}$ )
<b>Mechanical specifications</b>		
Connection type		cable
Housing material		Stainless steel 1.4305 / AISI 303
Degree of protection		IP67
<b>Cable</b>		
Wire end ferrules		yes
Cable diameter		$4.8 \text{ mm} \pm 0.2 \text{ mm}$
Bending radius		$> 10 \times \text{cable diameter}$
Material		PUR
Color		black
Number of cores		3
Core cross section		$0.34 \text{ mm}^2$
Length	L	2 m
<b>Dimensions</b>		
Height		8 mm
Width		20 mm
Length		32 mm

## Connection Assignment

