



### Model Number

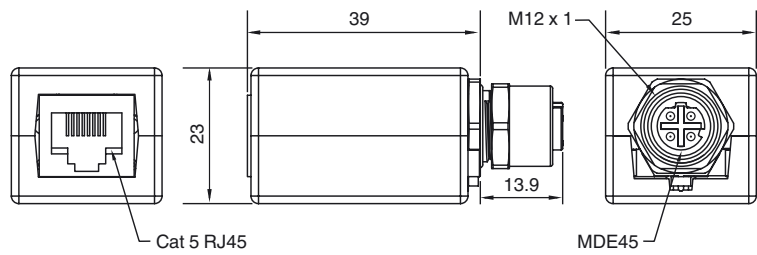
**V1D-M12H-V45-Y917140**

Panel mount, adapter RJ45 socket to M12 socket D-coded

### Features

- Front/screw mounting
- Suitable for 2-, 3- and 4-wire technology
- Panel mount connection adapter
- M12 D-coded to RJ45 (Shielded to coupling)

### Dimensions



### Technical data

#### General specifications

Number of pins	4
Connection 1	socket
Construction type 1	straight
Threading 1	M12
Connection 2	Male connector
Construction type 2	straight
Threading 2	RJ-45

#### Electrical specifications

Operating voltage	$U_B$	max ... 42 V DC
Operating current	$I_B$	max 1.5 A

#### Ambient conditions

Ambient temperature	-40 ... 80 °C (-40 ... 176 °F)
---------------------	--------------------------------

#### Mechanical specifications

Degree of protection	IP67
Material	
Contacts	Gold plated copper alloy
Housing	PBT
Connector	nickel-plated brass
Slotted nut	nickel-plated brass

#### General information

Note	Category 5 : RJ-45 connector
------	------------------------------

#### Compliance with standards and directives

Standard conformity	
Standards	CAT5 (IEC 11801:2002) , CAT5e (TIA 568B:2001) IEC 61076-2-101:2008

### Electrical connection

