



Diagnostic Manager Software

FieldConnex® Fieldbus

DTM-FC.AD*



- Software user interface for Advanced Diagnostic Modules
- Simultaneous access to all ADMs of a plant
- Embedded expert system gives pointed advice in clear text
- Includes Commissioning Wizard, data historian, oscilloscope...
- For FOUNDATION Fieldbus H1 and PROFIBUS PA
- Automatic setup of diagnostic system

User-Interface for Advanced Diagnostics, Professional Edition



Function

The FieldConnex® Diagnostic Manager displays measurements of HD2-DM-A Advanced Diagnostic Modules (ADM). It commissions and configures the ADMs and receives data and alarms in real-time. An Expert System learns values and characteristics of each segment and translates them into concise descriptions of causes in clear text. Maintenance or repair work can be scheduled proactively while the plant still operates. The Diagnostic Manager and ADM ensure best possible quality of the physical layer, higher plant availability and reduced troubleshooting effort.

Assembly



Technical Data

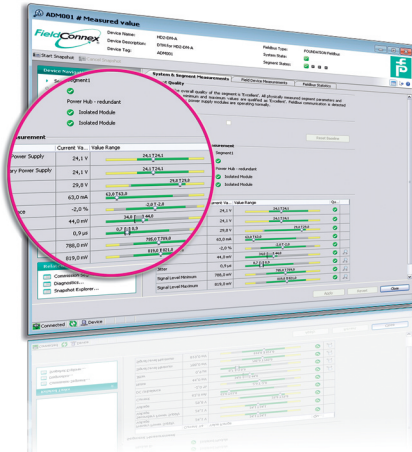
Software

Hardware requirements	PC with 1 GHz processor and at least 512 MByte RAM
Operating system	see release notes in the software package
Languages	English
Expert System	Built-in expert system interprets behavior of each segment based on rules and gives pointed information in clear text. Precisely diagnosis causes and suggests remedies, which are easy to understand.
Physical Layer Diagnostics	Bulk power health, segment voltage and current, unbalance, noise, signal level, signal polarity, jitter
Commissioning Wizard	Generates reports on physical layer and communications data per device or segment. Automates repetitive tasks during commissioning.
Snapshot Explorer	User interface to review the history of Physical Layer Measurement Reports stored.
History Data Export	Export of long-term history data to Excel and the file formats comma-separated (CSV) or binary for graphic analysis and diagram creation

Release date: 2024-09-20 Date of issue: 2024-09-20 Filename: t33373_eng.pdf

Technical Data

Segment Focus Mode	Fast update of detailed measurements for a single segment
Integrated oscilloscope	Displays fieldbus signals in waveform giving greatest detail. To aid troubleshooting activities, even seldom occurring events can be captured using the oscilloscope's many selectable trigger functions.
OPC Server Interface	The open OPC server interface can easily be adapted to any OPC client. It provides as a Data Access Server (Version 2.05) Summarized State information and basic diagnostic data such as the operating status of the diagnostic module and of the segments.
Remote diagnostics	Fieldbus experts and maintenance contractors are enabled to review Physical Layer diagnostics from off-site.



Release date: 2024-09-20 Date of issue: 2024-09-20 Filename: t33373_eng.pdf