



FieldConnex® DTM Collection

DTM FieldConnex

- User interface for PROFIBUS components
- Simple access to measurements, diagnostic and configuration data
- Supports any FDT/DTM host



Function

The FieldConnex® device type manager (DTM) collection provides the user interface and access to all process-relevant data online in real-time. The collection contains DTMs for FieldConnex process interfaces and PROFIBUS gateways. The DTM provides a standard interface for integration into any distributed control system supporting FDT/DTM technology. A DTM enables configuration and diagnostics independently of the control, operating, plant asset management, or engineering system. It provides remote access, thus improving safety for personnel and reducing time and effort for repair and plant upkeep. Early warnings from an instrument via DTM enable proactive plant upkeep only when it is needed and in time for the plant to remain in production. For DTMs regarding advanced diagnostic modules and gateways see separate datasheets.

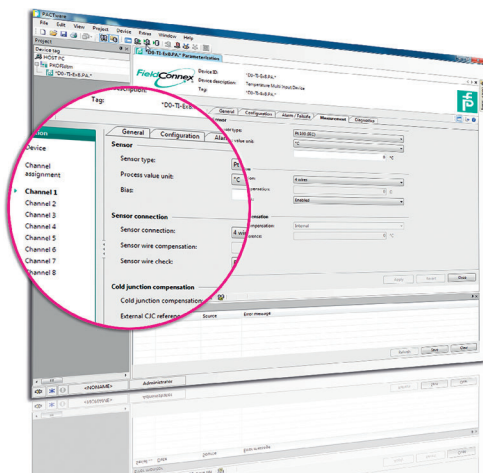
Technical Data

General specifications

Description	Device type manager for FieldConnex® components: HD2-GTR-4PA, PROFIBUS DP/PA gateway , *D0-TI-Ex8.PA.* , temperature multi-input device for PROFIBUS PA , *D0-MIO-Ex12.PA* , multi-input/output for PROFIBUS PA , *D0-TI-Ex8.PA.* , temperature multi-input device for PROFIBUS PA
-------------	--

Software

Hardware requirements	see release notes
Software requirements	Optional: Unzip tool Administrative privileges for the software installation
Operating system	see release notes in the software package
Licensing	Full license included





Accessories

	PACTware 4.1	FDT Framework
--	--------------	---------------

Release date: 2022-07-04 Date of issue: 2022-07-04 Filename: t34040_eng.pdf

Accessories

 PACTware 3.6	FDT Framework
 PACTware 5.0	FDT Framework

Release date: 2022-07-04 Date of issue: 2022-07-04 Filename: t34040_eng.pdf