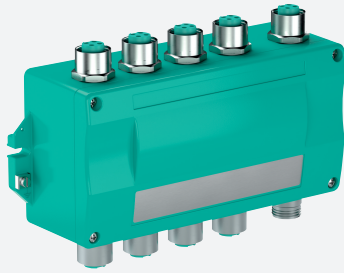


# Segment Protector Junction Box, Aluminum

SPJB-\*\*-AL\* .\*\*\*



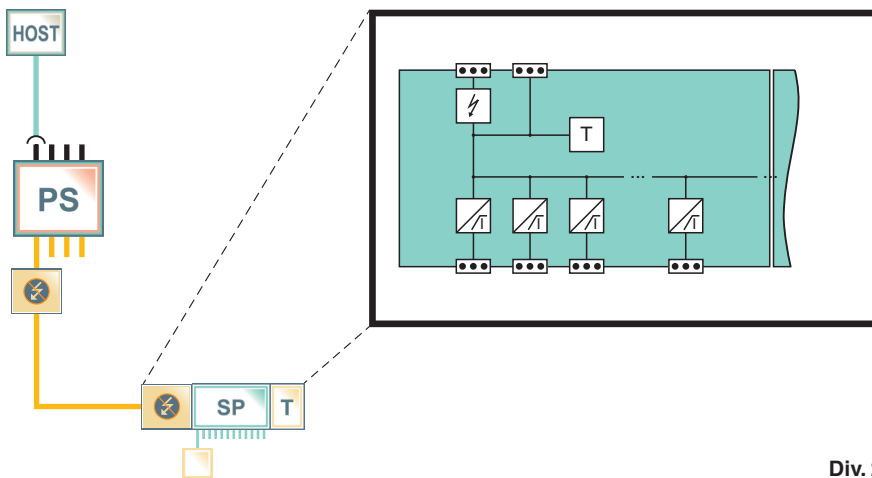
- Intrinsically safe (Ex ic)/non-incendive outputs
- Anodized aluminum, IP67
- Configurable cable entries for trunk and spurs
- Packaged solution
- For FOUNDATION Fieldbus H1 and PROFIBUS PA
- Installation in Class I, Division 2



## Function

This Segment Protector Junction Box is a device coupler with FieldConnex® Segment Protectors for Zone 2/Div 2. Devices can be located in Zone 2/Div 2. The number of outputs and size can be selected. Anodized aluminum provides corrosion resistance also to salt and impact resistance with lower weight compared to stainless steel. The compact housing offers convenient mounting flanges with external grounding lug. Trunk and spur entries can be selected individually from a range of cable glands and quick disconnects. This junction box is available pre-wired, with all accessories, for fast ordering, delivery, site installation, and commissioning.

## Connection



Div. 2

## Technical Data

### General specifications

Design / Mounting	Outside installation
Installed components	Segment Protector R2-SP-IC* For technical data on installed electronic component see data sheet.

### Conformity

Degree of protection	EN 60529
----------------------	----------

### Ambient conditions

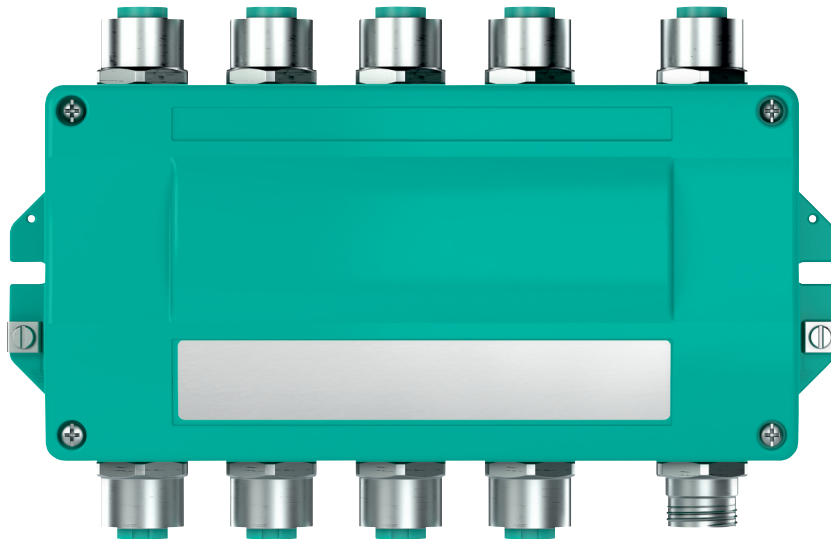
Ambient temperature	-40 ... 70 °C (-40 ... 158 °F)
Storage temperature	-40 ... 85 °C (-40 ... 185 °F)
Relative humidity	95 % , no moisture condensation

### Mechanical specifications

## Technical Data

Enclosure cover	detachable cover with retaining screws
Degree of protection	IP67
Cable entry	cable gland and stopping plug options see separate table
Material	
Housing	Aluminum
Surface	epoxy polyester paint
Seal	Polyurethane (PUR) , one-piece
Material thickness	enclosure body: 4 mm enclosure cover: 3 mm
Dimensions	(W x H x D) 114 x 258 x 84 mm
Mounting	panel mount with M6 slots
Grounding	grounding bolt on enclosure body and enclosure cover

## Assembly



**Product Versions**

**Connection type**

Type	Cable gland			Plug connection		Conduit connection
	CGP	CGB	CGS	7/8S	M12S	1/2CB
<b>Mechanical specifications</b>						
Protection degree	IP67	IP67	IP67	IP67	IP67	IP67
Material	polyamide	nickel-plated brass	stainless steel	stainless steel	stainless steel	nickel-plated brass
Thread	M16	M16	M16	M16	M16	M16
Outer sheath (mm)	5 ... 10	5 ... 10	5 ... 10	7/8" thread	M12	1/2" NPT conduit
<b>Cable</b>						
Suitable for armored cable	no	no	no	no	no	no

**Type Code**

**Electronic type**

**SPJB** Enclosure solution for R2-SP-N\*\*

**Number of spurs**

- 4 4 spurs
- 6 6 spurs
- 8 8 spurs
- 10 10 spurs
- 12 12 spurs

**Enclosure material**

**AL** Aluminum, anodized, IP67

**Connection type**

- NF** No fitting
- CGP** Cable gland M16, polyamide
- CGB** Cable gland M16, nickel-plated brass
- CGS** Cable gland M16, stainless steel
- 7/8S** Plug connection M16, stainless steel, 7/8" thread
- M12S** Plug connection M16, stainless steel, M12 thread
- 1/2CB** Conduit connection M16, nickel-plated brass, 1/2" NPT conduit adapter



Predefined characters indicate pre-set attributes.

Release date: 2022-07-04 Date of issue: 2022-07-04 Filename: t47948\_eng.pdf